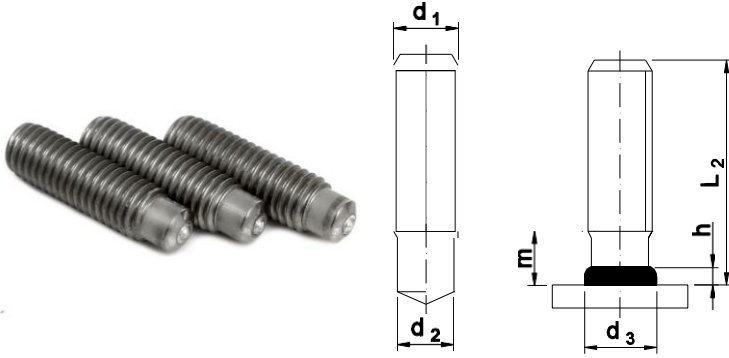


THREADED STUD TYPE RD



Material: stainless steel and steel 4.8

Use: threaded mounting studs with undercutthreads and shafts come in a wide range of applications in the marine and land industry.

Availability: on request (limited stock)

Logistic minimum: 100 pcs/package

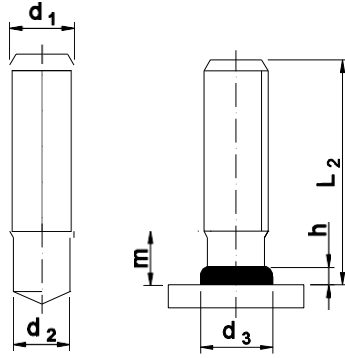
MATERIAL: STAINLESS STEEL

| d ₁ | L ₂ | d ₂ | m ≈ | d ₃ | h ≈ | Ceramic Ring |
|----------------|----------------|----------------|------|----------------|-----|--------------|
| M6 | 15 | 4,7 | 4,5 | 6,5 | 2,5 | RF6 |
| M6 | 20 | 4,7 | 4,5 | 6,5 | 2,5 | RF6 |
| M6 | 25 | 4,7 | 4,5 | 6,5 | 2,5 | RF6 |
| M6 | 30 | 4,7 | 4,5 | 6,5 | 2,5 | RF6 |
| M6 | 35 | 4,7 | 4,5 | 6,5 | 2,5 | RF6 |
| M6 | 40 | 4,7 | 4,5 | 6,5 | 2,5 | RF6 |
| M6 | 45 | 4,7 | 4,5 | 6,5 | 2,5 | RF6 |
| M6 | 50 | 4,7 | 4,5 | 6,5 | 2,5 | RF6 |
| M8 | 20 | 6,2 | 4,5 | 8,8 | 2,5 | RF8 |
| M8 | 25 | 6,2 | 4,5 | 8,8 | 2,5 | RF8 |
| M8 | 30 | 6,2 | 4,5 | 8,8 | 2,5 | RF8 |
| M8 | 35 | 6,2 | 4,5 | 8,8 | 2,5 | RF8 |
| M8 | 40 | 6,2 | 4,5 | 8,8 | 2,5 | RF8 |
| M8 | 45 | 6,2 | 4,5 | 8,8 | 2,5 | RF8 |
| M8 | 50 | 6,2 | 4,5 | 8,8 | 2,5 | RF8 |
| M10 | 20 | 7,9 | 5,0 | 11,0 | 3,0 | RF10 |
| M10 | 25 | 7,9 | 5,0 | 11,0 | 3,0 | RF10 |
| M10 | 30 | 7,9 | 5,0 | 11,0 | 3,0 | RF10 |
| M10 | 35 | 7,9 | 5,0 | 11,0 | 3,0 | RF10 |
| M10 | 40 | 7,9 | 5,0 | 11,0 | 3,0 | RF10 |
| M10 | 45 | 7,9 | 5,0 | 11,0 | 3,0 | RF10 |
| M10 | 50 | 7,9 | 5,0 | 11,0 | 3,0 | RF10 |
| M10 | 55 | 7,9 | 5,0 | 11,0 | 3,0 | RF10 |
| M10 | 60 | 7,9 | 5,0 | 11,0 | 3,0 | RF10 |
| M12 | 20 | 9,5 | 6,5 | 13,0 | 4,0 | RF12 |
| M12 | 25 | 9,5 | 6,5 | 13,0 | 4,0 | RF12 |
| M12 | 30 | 9,5 | 6,5 | 13,0 | 4,0 | RF12 |
| M12 | 35 | 9,5 | 6,5 | 13,0 | 4,0 | RF12 |
| M12 | 40 | 9,5 | 6,5 | 13,0 | 4,0 | RF12 |
| M12 | 45 | 9,5 | 6,5 | 13,0 | 4,0 | RF12 |
| M12 | 50 | 9,5 | 6,5 | 13,0 | 4,0 | RF12 |
| M12 | 55 | 9,5 | 6,5 | 13,0 | 4,0 | RF12 |
| M12 | 60 | 9,5 | 6,5 | 13,0 | 4,0 | RF12 |
| M16 | 30 | 13,2 | 11,0 | 17,0 | 5,0 | RF16 |
| M16 | 35 | 13,2 | 11,0 | 17,0 | 5,0 | RF16 |
| M16 | 40 | 13,2 | 11,0 | 17,0 | 5,0 | RF16 |
| M16 | 45 | 13,2 | 11,0 | 17,0 | 5,0 | RF16 |
| M16 | 50 | 13,2 | 11,0 | 17,0 | 5,0 | RF16 |
| M16 | 55 | 13,2 | 11,0 | 17,0 | 5,0 | RF16 |
| M16 | 60 | 13,2 | 11,0 | 17,0 | 5,0 | RF16 |
| M16 | 65 | 13,2 | 11,0 | 17,0 | 5,0 | RF16 |

MATERIAL: STEEL 4.8

| d ₁ | L ₂ | d ₂ | m ≈ | d ₃ | h ≈ | Ceramic Ring |
|----------------|----------------|----------------|------|----------------|-----|--------------|
| M6 | 15 | 4,7 | 4,5 | 6,5 | 2,5 | RF6 |
| M6 | 20 | 4,7 | 4,5 | 6,5 | 2,5 | RF6 |
| M6 | 25 | 4,7 | 4,5 | 6,5 | 2,5 | RF6 |
| M6 | 30 | 4,7 | 4,5 | 6,5 | 2,5 | RF6 |
| M6 | 35 | 4,7 | 4,5 | 6,5 | 2,5 | RF6 |
| M6 | 40 | 4,7 | 4,5 | 6,5 | 2,5 | RF6 |
| M6 | 45 | 4,7 | 4,5 | 6,5 | 2,5 | RF6 |
| M6 | 50 | 4,7 | 4,5 | 6,5 | 2,5 | RF6 |
| M8 | 20 | 6,2 | 4,5 | 8,8 | 2,5 | RF8 |
| M8 | 25 | 6,2 | 4,5 | 8,8 | 2,5 | RF8 |
| M8 | 30 | 6,2 | 4,5 | 8,8 | 2,5 | RF8 |
| M8 | 35 | 6,2 | 4,5 | 8,8 | 2,5 | RF8 |
| M8 | 40 | 6,2 | 4,5 | 8,8 | 2,5 | RF8 |
| M8 | 45 | 6,2 | 4,5 | 8,8 | 2,5 | RF8 |
| M8 | 50 | 6,2 | 4,5 | 8,8 | 2,5 | RF8 |
| M10 | 20 | 7,9 | 5,0 | 11,0 | 3,0 | RF10 |
| M10 | 25 | 7,9 | 5,0 | 11,0 | 3,0 | RF10 |
| M10 | 30 | 7,9 | 5,0 | 11,0 | 3,0 | RF10 |
| M10 | 35 | 7,9 | 5,0 | 11,0 | 3,0 | RF10 |
| M10 | 40 | 7,9 | 5,0 | 11,0 | 3,0 | RF10 |
| M10 | 45 | 7,9 | 5,0 | 11,0 | 3,0 | RF10 |
| M10 | 50 | 7,9 | 5,0 | 11,0 | 3,0 | RF10 |
| M10 | 55 | 7,9 | 5,0 | 11,0 | 3,0 | RF10 |
| M10 | 60 | 7,9 | 5,0 | 11,0 | 3,0 | RF10 |
| M12 | 20 | 9,5 | 6,5 | 13,0 | 4,0 | RF12 |
| M12 | 25 | 9,5 | 6,5 | 13,0 | 4,0 | RF12 |
| M12 | 30 | 9,5 | 6,5 | 13,0 | 4,0 | RF12 |
| M12 | 35 | 9,5 | 6,5 | 13,0 | 4,0 | RF12 |
| M12 | 40 | 9,5 | 6,5 | 13,0 | 4,0 | RF12 |
| M12 | 45 | 9,5 | 6,5 | 13,0 | 4,0 | RF12 |
| M12 | 50 | 9,5 | 6,5 | 13,0 | 4,0 | RF12 |
| M12 | 55 | 9,5 | 6,5 | 13,0 | 4,0 | RF12 |
| M12 | 60 | 9,5 | 6,5 | 13,0 | 4,0 | RF12 |
| M16 | 30 | 13,2 | 11,0 | 17,0 | 5,0 | RF16 |
| M16 | 35 | 13,2 | 11,0 | 17,0 | 5,0 | RF16 |
| M16 | 40 | 13,2 | 11,0 | 17,0 | 5,0 | RF16 |
| M16 | 45 | 13,2 | 11,0 | 17,0 | 5,0 | RF16 |
| M16 | 50 | 13,2 | 11,0 | 17,0 | 5,0 | RF16 |
| M16 | 55 | 13,2 | 11,0 | 17,0 | 5,0 | RF16 |
| M16 | 60 | 13,2 | 11,0 | 17,0 | 5,0 | RF16 |
| M16 | 65 | 13,2 | 11,0 | 17,0 | 5,0 | RF16 |
| M20 | 35 | 16,5 | 13,0 | 21,0 | 6,0 | RF20 |
| M20 | 40 | 16,5 | 13,0 | 21,0 | 6,0 | RF20 |
| M20 | 45 | 16,5 | 13,0 | 21,0 | 6,0 | RF20 |
| M20 | 50 | 16,5 | 13,0 | 21,0 | 6,0 | RF20 |
| M20 | 55 | 16,5 | 13,0 | 21,0 | 6,0 | RF20 |
| M20 | 60 | 16,5 | 13,0 | 21,0 | 6,0 | RF20 |
| M20 | 65 | 16,5 | 13,0 | 21,0 | 6,0 | RF20 |
| M20 | 70 | 16,5 | 13,0 | 21,0 | 6,0 | RF20 |
| M20 | 100 | 16,5 | 13,0 | 21,0 | 6,0 | RF20 |

THREADED ALUMINUM STUD TYPE RD



Material: aluminum, ALM 6082-6061

Use: threaded mounting studs with undercutthreads and shafts come in a wide range of applications in the marine and land industry.

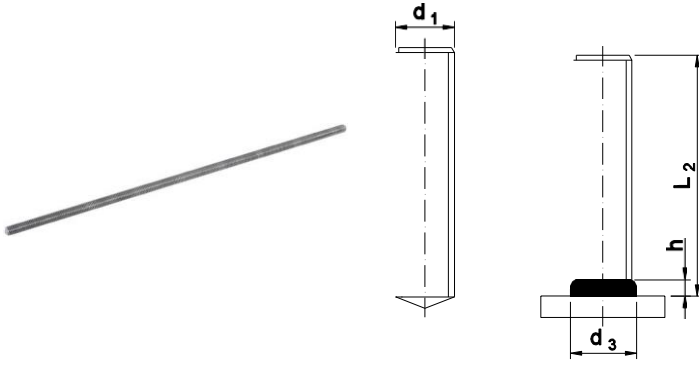
Availability: on request (limited stock)

Logistic minimum: 100 pcs/package

MATERIAL: ALUMINUM

| d ₁ | L ₂ | d ₂ | m ≈ | d ₃ | h ≈ | Ceramic Ring |
|----------------|----------------|----------------|------|----------------|-----|--------------|
| M6 | 15 | 4,7 | 4,5 | 6,5 | 2,5 | RF6 |
| M6 | 20 | 4,7 | 4,5 | 6,5 | 2,5 | RF6 |
| M6 | 25 | 4,7 | 4,5 | 6,5 | 2,5 | RF6 |
| M6 | 30 | 4,7 | 4,5 | 6,5 | 2,5 | RF6 |
| M6 | 35 | 4,7 | 4,5 | 6,5 | 2,5 | RF6 |
| M6 | 40 | 4,7 | 4,5 | 6,5 | 2,5 | RF6 |
| M6 | 45 | 4,7 | 4,5 | 6,5 | 2,5 | RF6 |
| M6 | 50 | 4,7 | 4,5 | 6,5 | 2,5 | RF6 |
| M8 | 20 | 6,2 | 4,5 | 8,8 | 2,5 | RF8 |
| M8 | 25 | 6,2 | 4,5 | 8,8 | 2,5 | RF8 |
| M8 | 30 | 6,2 | 4,5 | 8,8 | 2,5 | RF8 |
| M8 | 35 | 6,2 | 4,5 | 8,8 | 2,5 | RF8 |
| M8 | 40 | 6,2 | 4,5 | 8,8 | 2,5 | RF8 |
| M8 | 45 | 6,2 | 4,5 | 8,8 | 2,5 | RF8 |
| M8 | 50 | 6,2 | 4,5 | 8,8 | 2,5 | RF8 |
| M10 | 20 | 7,9 | 5,0 | 11,0 | 3,0 | RF10 |
| M10 | 25 | 7,9 | 5,0 | 11,0 | 3,0 | RF10 |
| M10 | 30 | 7,9 | 5,0 | 11,0 | 3,0 | RF10 |
| M10 | 35 | 7,9 | 5,0 | 11,0 | 3,0 | RF10 |
| M10 | 40 | 7,9 | 5,0 | 11,0 | 3,0 | RF10 |
| M10 | 45 | 7,9 | 5,0 | 11,0 | 3,0 | RF10 |
| M10 | 50 | 7,9 | 5,0 | 11,0 | 3,0 | RF10 |
| M10 | 55 | 7,9 | 5,0 | 11,0 | 3,0 | RF10 |
| M10 | 60 | 7,9 | 5,0 | 11,0 | 3,0 | RF10 |
| M12 | 20 | 9,5 | 6,5 | 13,0 | 4,0 | RF12 |
| M12 | 25 | 9,5 | 6,5 | 13,0 | 4,0 | RF12 |
| M12 | 30 | 9,5 | 6,5 | 13,0 | 4,0 | RF12 |
| M12 | 35 | 9,5 | 6,5 | 13,0 | 4,0 | RF12 |
| M12 | 40 | 9,5 | 6,5 | 13,0 | 4,0 | RF12 |
| M12 | 45 | 9,5 | 6,5 | 13,0 | 4,0 | RF12 |
| M12 | 50 | 9,5 | 6,5 | 13,0 | 4,0 | RF12 |
| M12 | 55 | 9,5 | 6,5 | 13,0 | 4,0 | RF12 |
| M12 | 60 | 9,5 | 6,5 | 13,0 | 4,0 | RF12 |
| M16 | 30 | 13,2 | 11,0 | 17,0 | 5,0 | RF16 |
| M16 | 35 | 13,2 | 11,0 | 17,0 | 5,0 | RF16 |
| M16 | 40 | 13,2 | 11,0 | 17,0 | 5,0 | RF16 |
| M16 | 45 | 13,2 | 11,0 | 17,0 | 5,0 | RF16 |
| M16 | 50 | 13,2 | 11,0 | 17,0 | 5,0 | RF16 |
| M16 | 55 | 13,2 | 11,0 | 17,0 | 5,0 | RF16 |
| M16 | 60 | 13,2 | 11,0 | 17,0 | 5,0 | RF16 |
| M16 | 65 | 13,2 | 11,0 | 17,0 | 5,0 | RF16 |

THREADED STUD TYPE DD



Material: stainless steel and steel 4.8

Use: mounting studs are fully threaded and usable in a wide range of marine and land industry.

Availability: on request (limited stock)

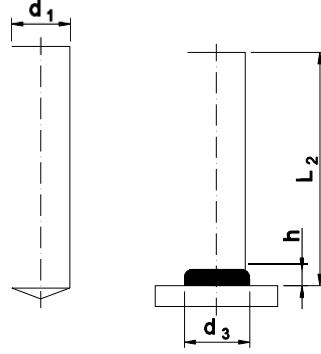
Logistic minimum: 100 pcs/package

MATERIAL: STAINLESS STEEL

| d_1 | L_2 | d_3 | $h \approx$ | Ceramic Ring |
|-------|-------|-------|-------------|--------------|
| M6 | 20 | 8,7 | 3,2 | UF6 |
| M6 | 25 | 8,7 | 3,2 | UF6 |
| M6 | 30 | 8,7 | 3,2 | UF6 |
| M6 | 35 | 8,7 | 3,2 | UF6 |
| M6 | 40 | 8,7 | 3,2 | UF6 |
| M6 | 45 | 8,7 | 3,2 | UF6 |
| M6 | 50 | 8,7 | 3,2 | UF6 |
| M6 | 55 | 8,7 | 3,2 | UF6 |
| M6 | 60 | 8,7 | 3,2 | UF6 |
| M8 | 20 | 11,0 | 3,5 | UF8 |
| M8 | 25 | 11,0 | 3,5 | UF8 |
| M8 | 30 | 11,0 | 3,5 | UF8 |
| M8 | 35 | 11,0 | 3,5 | UF8 |
| M8 | 40 | 11,0 | 3,5 | UF8 |
| M8 | 45 | 11,0 | 3,5 | UF8 |
| M8 | 50 | 11,0 | 3,5 | UF8 |
| M8 | 55 | 11,0 | 3,5 | UF8 |
| M8 | 60 | 11,0 | 3,5 | UF8 |
| M10 | 20 | 13,5 | 3,5 | UF10 |
| M10 | 25 | 13,5 | 3,5 | UF10 |
| M10 | 30 | 13,5 | 3,5 | UF10 |
| M10 | 35 | 13,5 | 3,5 | UF10 |
| M10 | 40 | 13,5 | 3,5 | UF10 |
| M10 | 45 | 13,5 | 3,5 | UF10 |
| M10 | 50 | 13,5 | 3,5 | UF10 |
| M10 | 55 | 13,5 | 3,5 | UF10 |
| M10 | 60 | 13,5 | 3,5 | UF10 |
| M12 | 20 | 15,5 | 4,5 | UF12 |
| M12 | 25 | 15,5 | 4,5 | UF12 |
| M12 | 30 | 15,5 | 4,5 | UF12 |
| M12 | 35 | 15,5 | 4,5 | UF12 |
| M12 | 40 | 15,5 | 4,5 | UF12 |
| M12 | 45 | 15,5 | 4,5 | UF12 |
| M12 | 50 | 15,5 | 4,5 | UF12 |
| M12 | 55 | 15,5 | 4,5 | UF12 |
| M12 | 60 | 15,5 | 4,5 | UF12 |
| M16 | 30 | 20,5 | 7,0 | UF16 |
| M16 | 35 | 20,5 | 7,0 | UF16 |
| M16 | 40 | 20,5 | 7,0 | UF16 |
| M16 | 45 | 20,5 | 7,0 | UF16 |
| M16 | 50 | 20,5 | 7,0 | UF16 |
| M16 | 55 | 20,5 | 7,0 | UF16 |
| M16 | 60 | 20,5 | 7,0 | UF16 |
| M16 | 65 | 20,5 | 7,0 | UF16 |

MATERIAL: STEEL 4.8

| d ₁ | L ₂ | d ₃ | h ≈ | Ceramic Ring |
|----------------|----------------|----------------|-----|--------------|
| M6 | 20 | 8,7 | 3,2 | UF6 |
| M6 | 25 | 8,7 | 3,2 | UF6 |
| M6 | 30 | 8,7 | 3,2 | UF6 |
| M6 | 35 | 8,7 | 3,2 | UF6 |
| M6 | 40 | 8,7 | 3,2 | UF6 |
| M6 | 45 | 8,7 | 3,2 | UF6 |
| M6 | 50 | 8,7 | 3,2 | UF6 |
| M6 | 55 | 8,7 | 3,2 | UF6 |
| M6 | 60 | 8,7 | 3,2 | UF6 |
| M8 | 20 | 11,0 | 3,5 | UF8 |
| M8 | 25 | 11,0 | 3,5 | UF8 |
| M8 | 30 | 11,0 | 3,5 | UF8 |
| M8 | 35 | 11,0 | 3,5 | UF8 |
| M8 | 40 | 11,0 | 3,5 | UF8 |
| M8 | 45 | 11,0 | 3,5 | UF8 |
| M8 | 50 | 11,0 | 3,5 | UF8 |
| M8 | 55 | 11,0 | 3,5 | UF8 |
| M8 | 60 | 11,0 | 3,5 | UF8 |
| M10 | 20 | 13,5 | 3,5 | UF10 |
| M10 | 25 | 13,5 | 3,5 | UF10 |
| M10 | 30 | 13,5 | 3,5 | UF10 |
| M10 | 35 | 13,5 | 3,5 | UF10 |
| M10 | 40 | 13,5 | 3,5 | UF10 |
| M10 | 45 | 13,5 | 3,5 | UF10 |
| M10 | 50 | 13,5 | 3,5 | UF10 |
| M10 | 55 | 13,5 | 3,5 | UF10 |
| M10 | 60 | 13,5 | 3,5 | UF10 |
| M12 | 20 | 15,5 | 4,5 | UF12 |
| M12 | 25 | 15,5 | 4,5 | UF12 |
| M12 | 30 | 15,5 | 4,5 | UF12 |
| M12 | 35 | 15,5 | 4,5 | UF12 |
| M12 | 40 | 15,5 | 4,5 | UF12 |
| M12 | 45 | 15,5 | 4,5 | UF12 |
| M12 | 50 | 15,5 | 4,5 | UF12 |
| M12 | 55 | 15,5 | 4,5 | UF12 |
| M12 | 60 | 15,5 | 4,5 | UF12 |
| M16 | 30 | 20,5 | 7,0 | UF16 |
| M16 | 35 | 20,5 | 7,0 | UF16 |
| M16 | 40 | 20,5 | 7,0 | UF16 |
| M16 | 45 | 20,5 | 7,0 | UF16 |
| M16 | 50 | 20,5 | 7,0 | UF16 |
| M16 | 55 | 20,5 | 7,0 | UF16 |
| M16 | 60 | 20,5 | 7,0 | UF16 |
| M16 | 65 | 20,5 | 7,0 | UF16 |



Material: stainless steel and steel 4.8

Use: unthreaded mounting studs come in a wide range of applications in the marine and land industry.

Availability: on request (limited stock)

Logistic minimum: 100 pcs/package

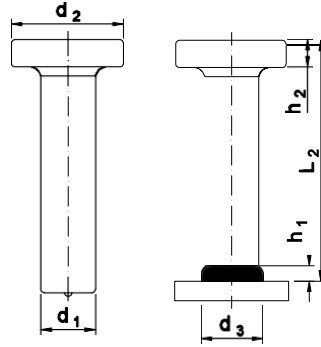
MATERIAL: STAINLESS STEEL

| d ₁ | L ₂ | d ₃ | h ≈ | Ferrule |
|----------------|----------------|----------------|-----|---------|
| 6 | 20 | 8,5 | 4,0 | UF6 |
| 6 | 25 | 8,5 | 4,0 | UF6 |
| 6 | 30 | 8,5 | 4,0 | UF6 |
| 6 | 35 | 8,5 | 4,0 | UF6 |
| 6 | 40 | 8,5 | 4,0 | UF6 |
| 6 | 45 | 8,5 | 4,0 | UF6 |
| 6 | 50 | 8,5 | 4,0 | UF6 |
| 6 | 55 | 8,5 | 4,0 | UF6 |
| 6 | 60 | 8,5 | 4,0 | UF6 |
| 8 | 20 | 11,0 | 4,0 | UF8 |
| 8 | 25 | 11,0 | 4,0 | UF8 |
| 8 | 30 | 11,0 | 4,0 | UF8 |
| 8 | 35 | 11,0 | 4,0 | UF8 |
| 8 | 40 | 11,0 | 4,0 | UF8 |
| 8 | 45 | 11,0 | 4,0 | UF8 |
| 8 | 50 | 11,0 | 4,0 | UF8 |
| 8 | 55 | 11,0 | 4,0 | UF8 |
| 8 | 60 | 11,0 | 4,0 | UF8 |
| 10 | 20 | 13,0 | 4,0 | UF10 |
| 10 | 25 | 13,0 | 4,0 | UF10 |
| 10 | 30 | 13,0 | 4,0 | UF10 |
| 10 | 35 | 13,0 | 4,0 | UF10 |
| 10 | 40 | 13,0 | 4,0 | UF10 |
| 10 | 45 | 13,0 | 4,0 | UF10 |
| 10 | 50 | 13,0 | 4,0 | UF10 |
| 10 | 55 | 13,0 | 4,0 | UF10 |
| 10 | 60 | 13,0 | 4,0 | UF10 |
| 12 | 20 | 16,0 | 4,0 | UF12 |
| 12 | 25 | 16,0 | 4,0 | UF12 |
| 12 | 30 | 16,0 | 4,0 | UF12 |
| 12 | 35 | 16,0 | 4,0 | UF12 |
| 12 | 40 | 16,0 | 4,0 | UF12 |
| 12 | 45 | 16,0 | 4,0 | UF12 |
| 12 | 50 | 16,0 | 4,0 | UF12 |
| 12 | 55 | 16,0 | 4,0 | UF12 |
| 12 | 60 | 16,0 | 4,0 | UF12 |
| 16 | 30 | 20,0 | 4,0 | UF16 |
| 16 | 35 | 20,0 | 4,0 | UF16 |
| 16 | 40 | 20,0 | 4,0 | UF16 |
| 16 | 45 | 20,0 | 4,0 | UF16 |
| 16 | 50 | 20,0 | 4,0 | UF16 |
| 16 | 55 | 20,0 | 4,0 | UF16 |
| 16 | 60 | 20,0 | 4,0 | UF16 |

MATERIAL: STEEL 4.8

| d ₁ | L ₂ | d ₃ | h ≈ | Ferrule |
|----------------|----------------|----------------|-----|---------|
| 6 | 20 | 8,5 | 4,0 | UF6 |
| 6 | 25 | 8,5 | 4,0 | UF6 |
| 6 | 30 | 8,5 | 4,0 | UF6 |
| 6 | 35 | 8,5 | 4,0 | UF6 |
| 6 | 40 | 8,5 | 4,0 | UF6 |
| 6 | 45 | 8,5 | 4,0 | UF6 |
| 6 | 50 | 8,5 | 4,0 | UF6 |
| 6 | 55 | 8,5 | 4,0 | UF6 |
| 6 | 60 | 8,5 | 4,0 | UF6 |
| 8 | 20 | 11,0 | 4,0 | UF8 |
| 8 | 25 | 11,0 | 4,0 | UF8 |
| 8 | 30 | 11,0 | 4,0 | UF8 |
| 8 | 35 | 11,0 | 4,0 | UF8 |
| 8 | 40 | 11,0 | 4,0 | UF8 |
| 8 | 45 | 11,0 | 4,0 | UF8 |
| 8 | 50 | 11,0 | 4,0 | UF8 |
| 8 | 55 | 11,0 | 4,0 | UF8 |
| 8 | 60 | 11,0 | 4,0 | UF8 |
| 10 | 20 | 13,0 | 4,0 | UF10 |
| 10 | 25 | 13,0 | 4,0 | UF10 |
| 10 | 30 | 13,0 | 4,0 | UF10 |
| 10 | 35 | 13,0 | 4,0 | UF10 |
| 10 | 40 | 13,0 | 4,0 | UF10 |
| 10 | 45 | 13,0 | 4,0 | UF10 |
| 10 | 50 | 13,0 | 4,0 | UF10 |
| 10 | 55 | 13,0 | 4,0 | UF10 |
| 10 | 60 | 13,0 | 4,0 | UF10 |
| 12 | 20 | 16,0 | 4,0 | UF12 |
| 12 | 25 | 16,0 | 4,0 | UF12 |
| 12 | 30 | 16,0 | 4,0 | UF12 |
| 12 | 35 | 16,0 | 4,0 | UF12 |
| 12 | 40 | 16,0 | 4,0 | UF12 |
| 12 | 45 | 16,0 | 4,0 | UF12 |
| 12 | 50 | 16,0 | 4,0 | UF12 |
| 12 | 55 | 16,0 | 4,0 | UF12 |
| 12 | 60 | 16,0 | 4,0 | UF12 |
| 16 | 30 | 20,0 | 4,0 | UF16 |
| 16 | 35 | 20,0 | 4,0 | UF16 |
| 16 | 40 | 20,0 | 4,0 | UF16 |
| 16 | 45 | 20,0 | 4,0 | UF16 |
| 16 | 50 | 20,0 | 4,0 | UF16 |
| 16 | 55 | 20,0 | 4,0 | UF16 |
| 16 | 60 | 20,0 | 4,0 | UF16 |
| 16 | 65 | 20,0 | 4,0 | UF16 |

HEADED STUD SD



Material: structural steel
S235J2+C450 or S355J2+C450

Use: studs are welded on the surface of steel structures, the studs poured with concrete creates the kind of connector between steel construction and concrete.

Availability: on request (limited stock)

Logistic minimum: 100 pcs/package

MATERIAL: STRUCTURAL STEEL S235J2

| d_1 | L_2 | h_1 | d_2 | d_3 | h_2 |
|-------|-------|-------|-------|-------|-------|
| 10 | 50 | 2,5 | 19 | 13 | 7 |
| 10 | 75 | 2,5 | 19 | 13 | 7 |
| 10 | 100 | 2,5 | 19 | 13 | 7 |
| 10 | 125 | 2,5 | 19 | 13 | 7 |
| 10 | 150 | 2,5 | 19 | 13 | 7 |
| 10 | 175 | 2,5 | 19 | 13 | 7 |
| 10 | 200 | 2,5 | 19 | 13 | 7 |
| 13 | 50 | 3 | 25 | 17 | 8 |
| 13 | 75 | 3 | 25 | 17 | 8 |
| 13 | 100 | 3 | 25 | 17 | 8 |
| 13 | 125 | 3 | 25 | 17 | 8 |
| 13 | 150 | 3 | 25 | 17 | 8 |
| 13 | 175 | 3 | 25 | 17 | 8 |
| 13 | 200 | 3 | 25 | 17 | 8 |
| 13 | 225 | 3 | 25 | 17 | 8 |
| 13 | 250 | 3 | 25 | 17 | 8 |
| 13 | 300 | 3 | 25 | 17 | 8 |
| 13 | 350 | 3 | 25 | 17 | 8 |
| 13 | 400 | 3 | 25 | 17 | 8 |
| 16 | 50 | 4,5 | 32 | 21 | 8 |
| 16 | 75 | 4,5 | 32 | 21 | 8 |
| 16 | 100 | 4,5 | 32 | 21 | 8 |
| 16 | 125 | 4,5 | 32 | 21 | 8 |
| 16 | 150 | 4,5 | 32 | 21 | 8 |
| 16 | 175 | 4,5 | 32 | 21 | 8 |
| 16 | 200 | 4,5 | 32 | 21 | 8 |
| 16 | 225 | 4,5 | 32 | 21 | 8 |
| 16 | 250 | 4,5 | 32 | 21 | 8 |
| 16 | 275 | 4,5 | 32 | 21 | 8 |
| 16 | 300 | 4,5 | 32 | 21 | 8 |
| 16 | 350 | 4,5 | 32 | 21 | 8 |
| 16 | 400 | 4,5 | 32 | 21 | 8 |
| 16 | 525 | 4,5 | 32 | 21 | 8 |

Part Length Standards : All products are manufactured upon request in a length of 200 mm.

Light Alloy Steel

Standard mild steel studs manufactured by Vizyon conform to ASTM A29 chemistry specifications for grades 1010 through 1020 mild steels. Physical properties of mild steel Vizyon studs are in accordance with AWS D1.1. Special studs can also be manufactured of other weldable mild steels. Heat treatments and plating can be applied to mild steel studs, upon request

Stainless Steel

Standard Vizyon studs manufactured of stainless steel conform to ASTM A276 or A493 specifications. Studs can be manufactured from other weldable stainless steel alloys. Mechanical properties of Vizyon stainless steel studs depend on the cold working or heat treatment applied to the studs after forming. Stainless steel studs can be annealed, upon request.

Aluminum

Vizyon manufactured aluminum studs are made from Aluminum Association (AA) alloys 6061 and 6082

Plating

Plating is useful to increase a stud's corrosion resistance. Unless otherwise specified at the time of order, all Vizyon studs will be supplied un-plated. Upon request, the following types of surface protection are available:

- Zinc Plating
- Zinc Dichromating
- Copper Plating
- Nickel Plating

Recommended Stud Welding Machine (It can be used on different machines. Please request sample product for testing.)



| TYPE | AÇIKLAMA |
|---------------------|---------------------------------|
| Kaynak Saplama Çapı | M3 ile M10 çap 2 ile 8mm |
| Welding Range | M3 to M10 dia2 to 8mm (Type RD) |
| Kaynak Metali | Yumuşak Çelik, Paslanmaz Çelik |
| Welding Metarial | Mild Steel, Stainless Steel |

| | |
|---|--|
| Kaynak Miktarı Welding Rate | 5 ile 35 saplama/dak saplama çapı ve uygulamaya bağlı 5 to 35 steds/min (depending on application and stud dia) |
| Kaynak Akımı Welding Current | 580 A |
| Kaynak Zamanı Welding Time | 5 ile 350 m Saniye 5 to 35 m Sec |
| Ana Fiş Primary Power | 32 A (at 400V mains) |
| Soğutma Tipi Cooling Type | F(Isı kontrollü soğutma fanı) F(Temperature controlled cooling fan) |
| Güç Kaynağı Power Source | Transformer / Rectifier Capacitor |
| Ana Güç Primary Power | 400 V, 3 phases 50/60 Hz 35AT |
| Koruma Sınıfı Protection Class | IP 23 |
| Boyutlar LxWxH Dimension | 470x230x220mm without handle |
| Ağırlık Weight | 31 Kg |
| Uygun Saplama Kaynak Tabancaları Suitable stud welding gun | CA08 / A 12 / AI 06 / A16 |



ŞİRKET ÜNVANIMIZ :

Vizyon İnovatif Yalıtım Enerji ve Müh.Ltd.Şti.

Postane Mah. Yalıboyu Cad. No: 81 / 1 Tuzla / İstanbul

TUZLA VD. 925 0770 431