



COMPANY PRESENTATION



December, 2023



ABOUT US

TEKNOPARK İSTANBUL



ABOUT US

ADVENS is an advanced engineering company that continues its projects in Teknopark İstanbul Office.

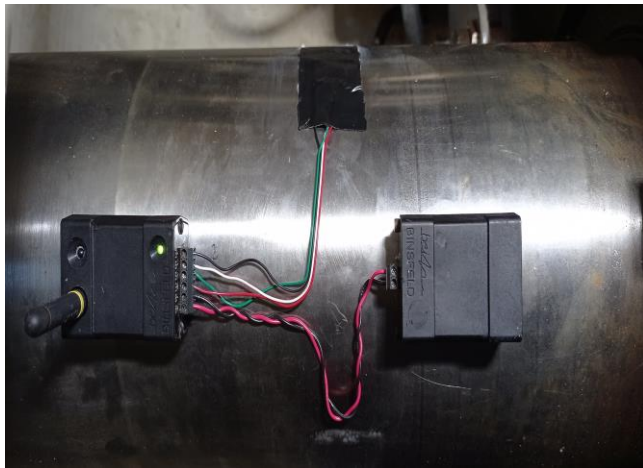
Mainly serves for Defence, Marine and Aviation Industries with advanced engineering solutions by using international and own developed proven softwares.

In this context, R&D studies are carried on intensively and new methods and solutions are developed in accordance with company innovative vision.

DEFENSE



MARINE & OFFSHORE



TEST & MEASUREMENT

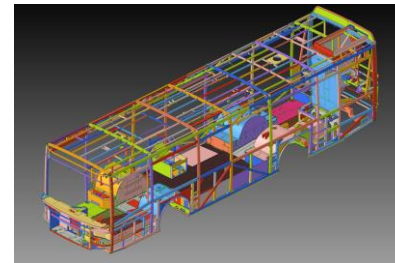
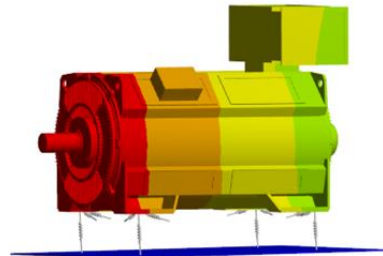
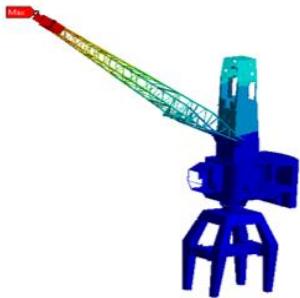
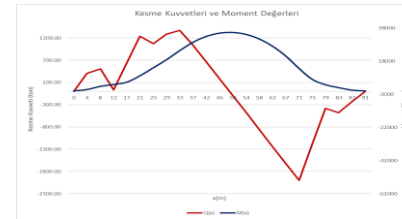
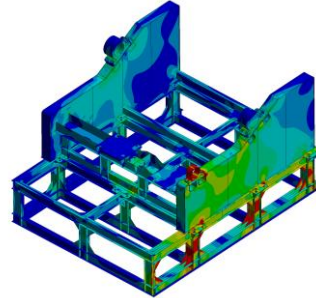
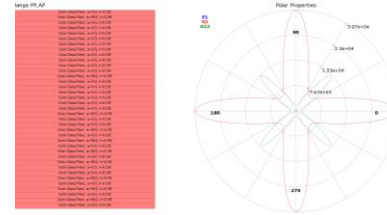
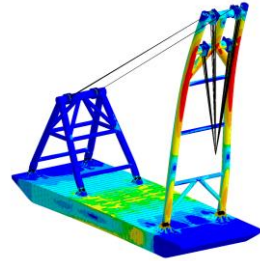
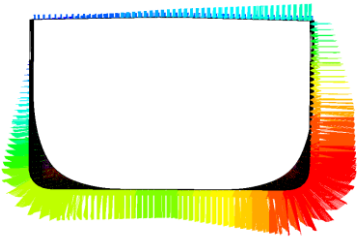
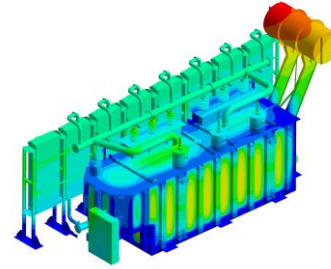
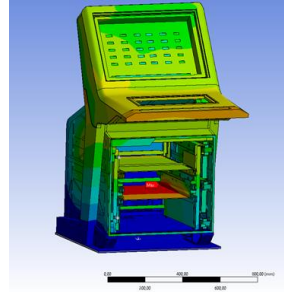
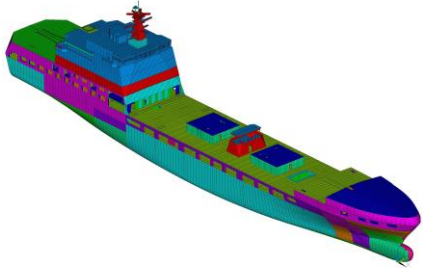


R & D



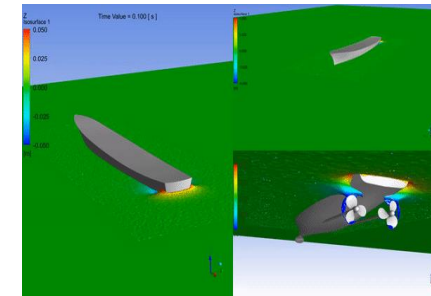
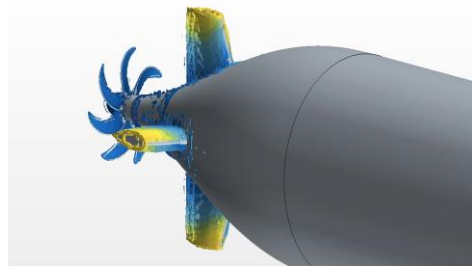
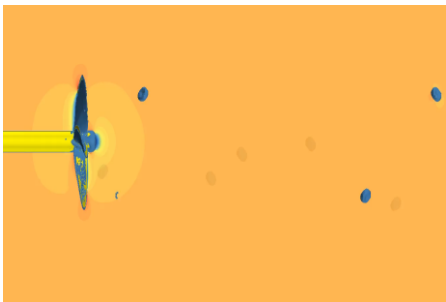
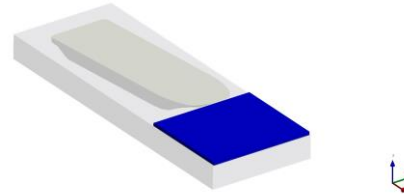
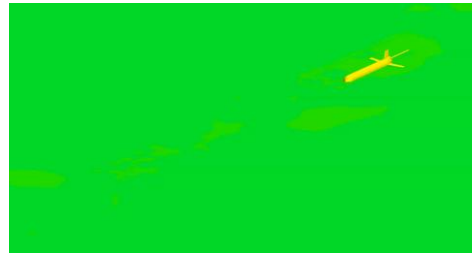
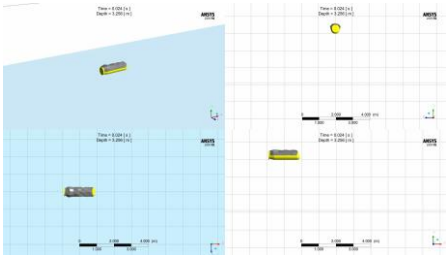
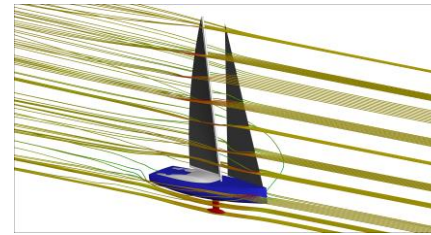
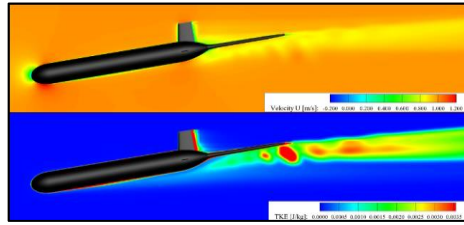
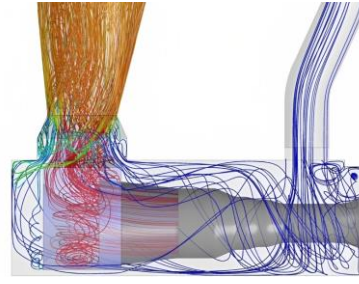
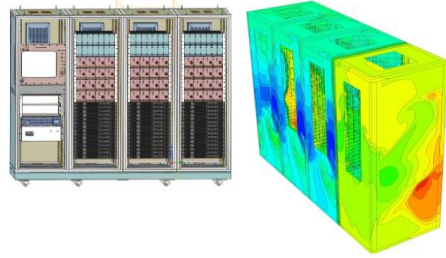
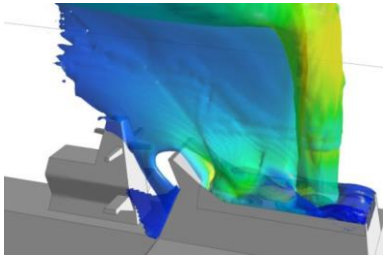
DEFENSE





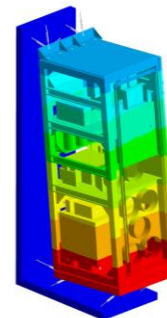
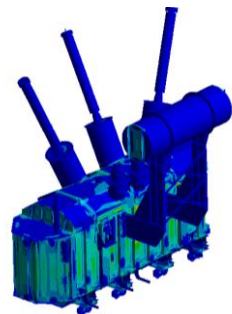
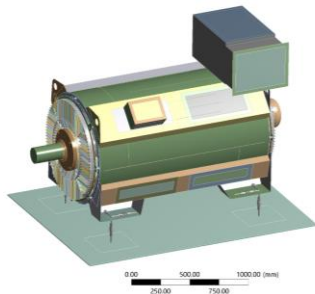
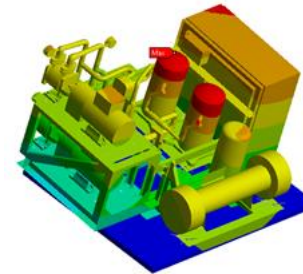
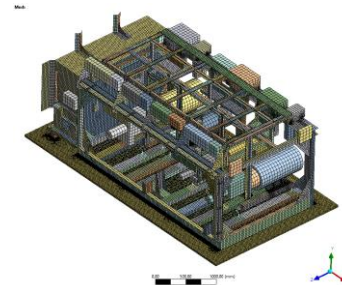
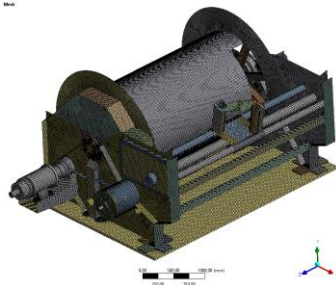
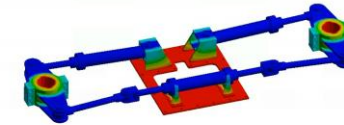
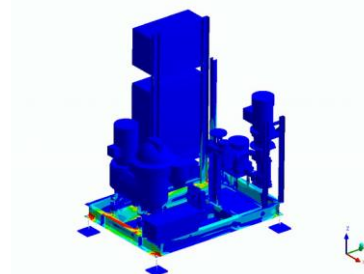
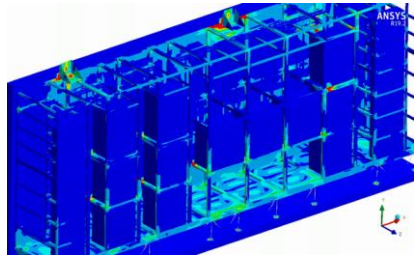
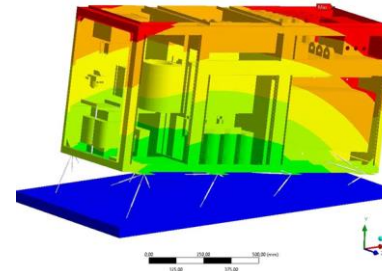
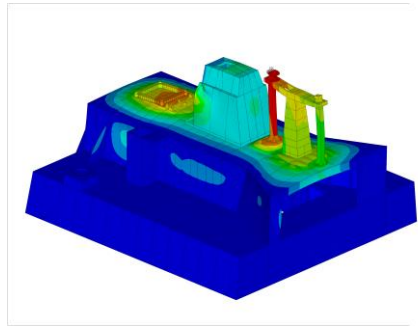
STRENGTH

- Material Elastic And Plastic Deformation, Extension, Fatigue, Buckling, Stiffness Strength Analyses
- Metal, Composite, Rubber, Glass, Concrete, etc. Material Modelling
- Welded, Bolt, Rivet, Laminated Connection
- Transient and Harmonic Analyses
- Random and Modal Vibration
- Scantling & Stability Calculations



FLUID DYNAMICS & ACOUSTIC

- Single and Multi Flow Analyses
- Resistance and Power Analyses
- Thermal Analyses
- Hydrodynamic Analyses
- Underwater Acoustic Analyses
- Underwater Motion Simulations
- Air-Borne and Structural-Borne Noise Calculation by Statistical Energy Analyses (SEA) and Finite Element Analyses (FEA)
- Silencer Design
- Cooling, Exhaust, Funnel System Silencer Design and Analyses



UNDEX & SHOCK

- MIL-STD-810G Environmental Engineering Considerations and Laboratory Tests, Depart. of Defense
- STANAG 4141 Shock Testing of Equipment for Surface Ships, NATO
- BV 043 Shock Safety, Specification for Ships of German Federal Army
- Shock Mount Calculations
- Equipment Test and Fixture Design



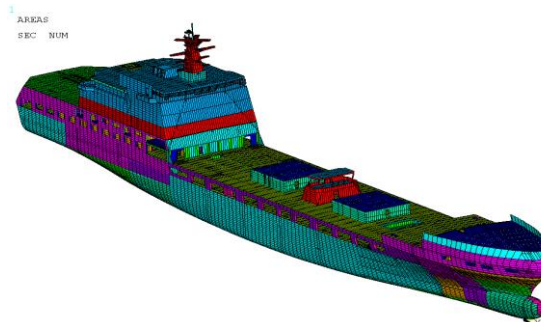
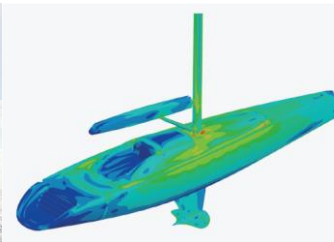
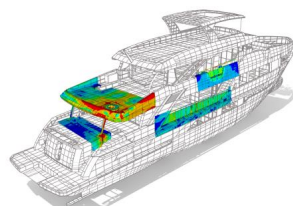
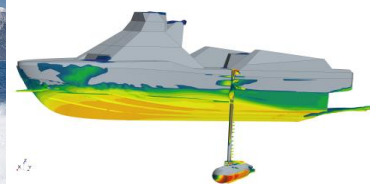
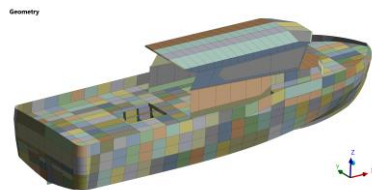
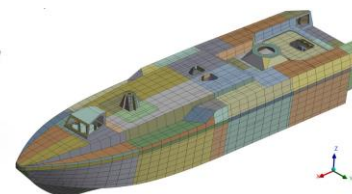
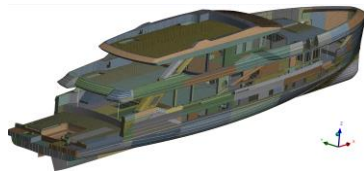
NAVAL SHIPS

- I CLASS MILGEM FRIGATE
- TVEG PROJECT
- PN MILGEM PROJECT
- LHD PROJECT
- DİMDEG PROJECT
- BURAK CLASS CORVETTE MODERNIZATION
- GABYA CLASS FRIGATE MODERNIZATION
- BARBAROS CLASS FRIGATE MODERNIZATION
- OPEN SEA PATROL SHIP
- FAST ATTACK BOAT
- OPEN SEA PATROL SHIP (NIGERIA)
- MİR SİDA PROJECT



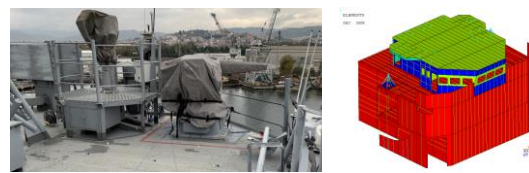
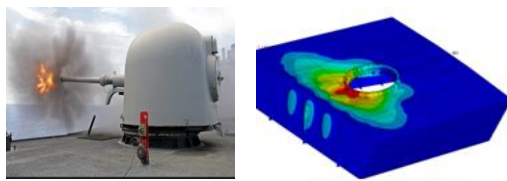
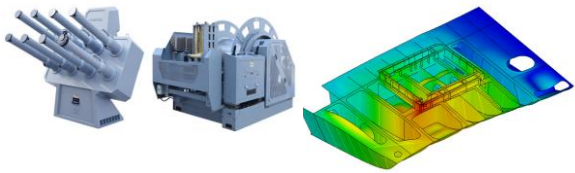
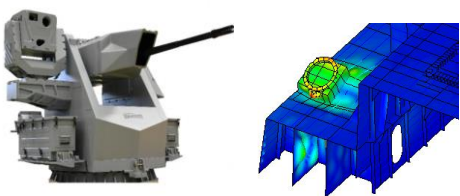
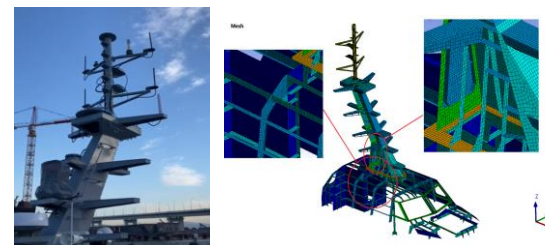
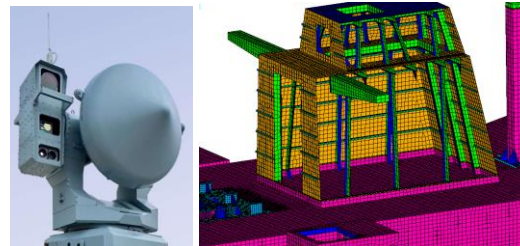
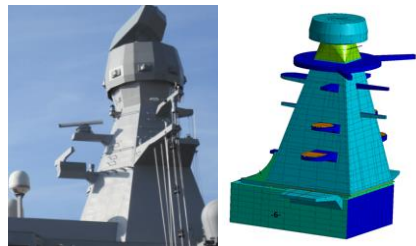
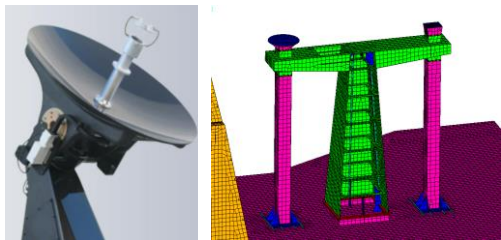
SHIPS

- SIDA (UNMANNED)
- MİR SIDA (UNMANNED)
- ULAQ (UNMANNED)
- MEGA YACHT (BERING YACHT)
- MOTOR YACHT (ADA YACHT)
- FIBER YACHT (SIRENA MARINE)
- SUPPLY SHIP
- ASTORIA GRANDE CRUISE SHIP



FEA ANALYSIS

- GLOBAL STRENGTH
- GLOBAL VIBRATION
- FATIGUE AND BUCKLING
- NOISE ANALYSES
- FOUNDATION
- CFD ANALYSES
- MOORING, ANCHORING
- SCANTLING



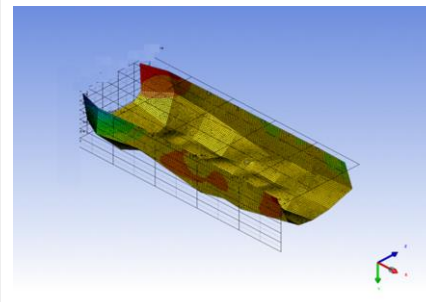
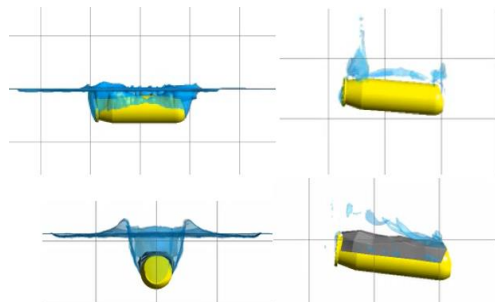
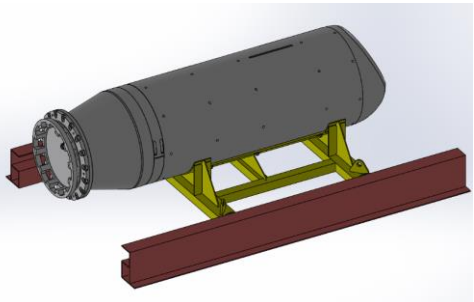
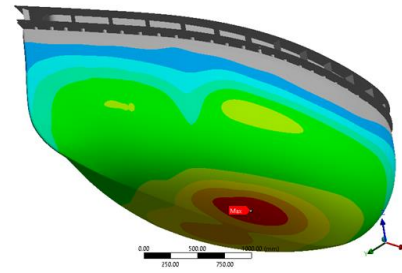
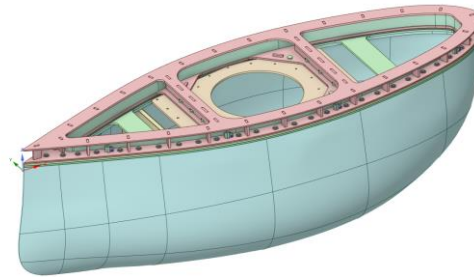
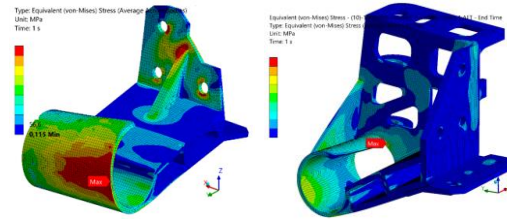
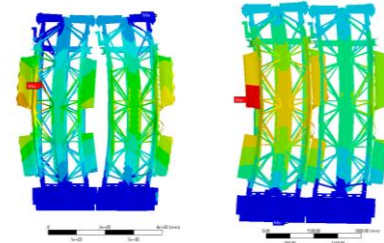
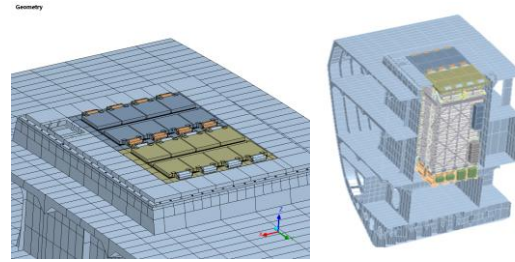
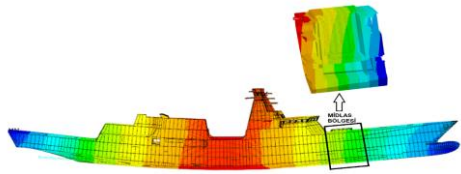
DEFENSE

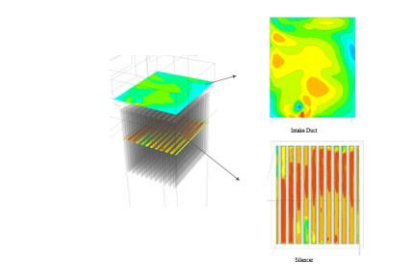
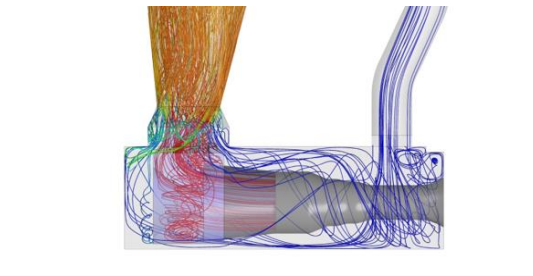
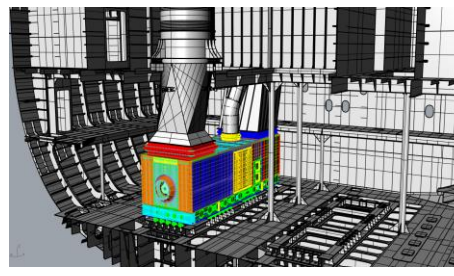
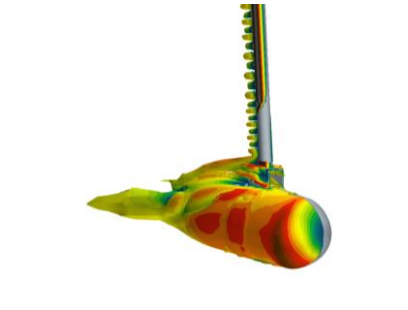
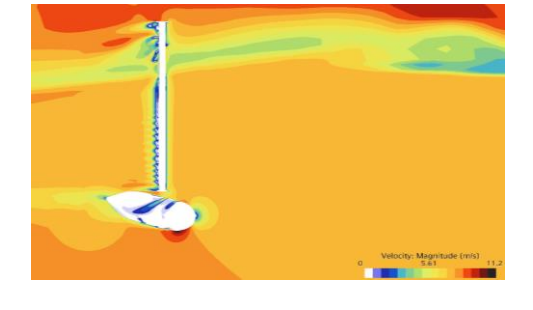
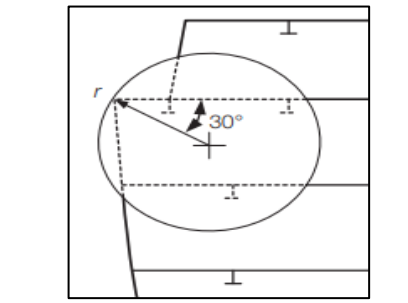
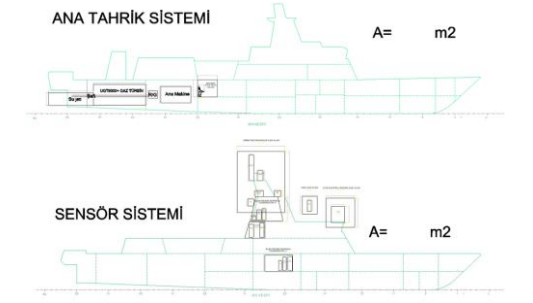
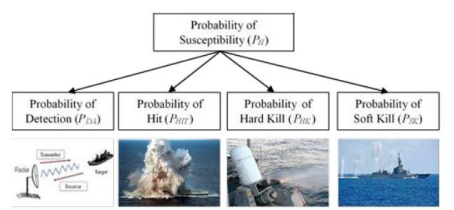
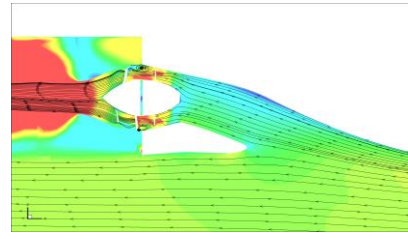
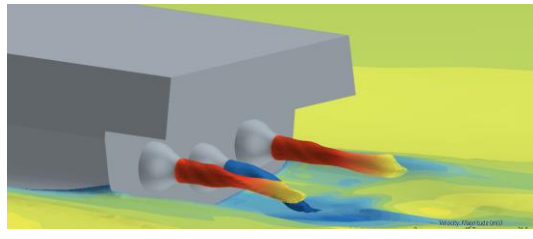
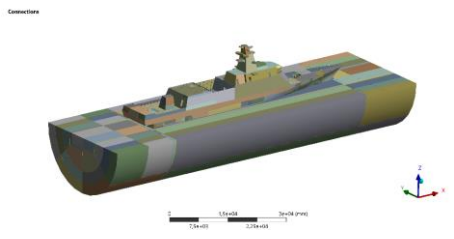
- RADAR & ELECTRONIC SYSTEM INSTALLATION ANALYSES
- WEAPON SYSTEM INSTALLATION ANALYSES

DEFENSE

- VERTICAL LAUNCHER SYSTEM INSTALLATION ANALYSES
- HELICOPTER WING ARMOR ANALYSES
- SONAR DOME ANALYSES
- UNDERWATER DEEP MINE ANALYSES

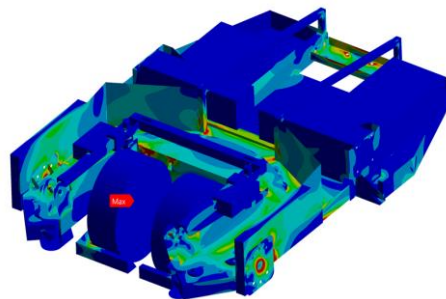
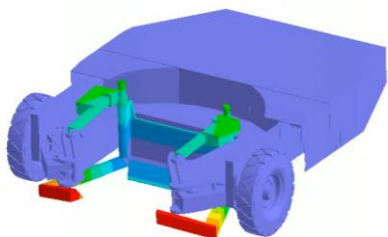
- C O M M E R C I A L -
C O N F I D E N T I A L





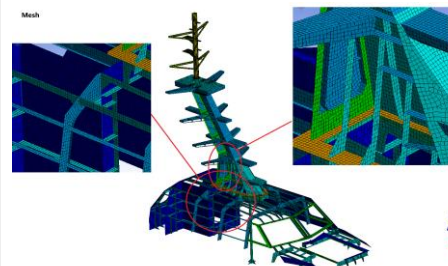
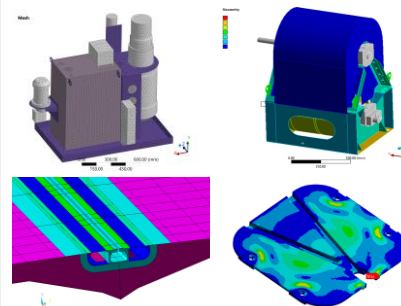
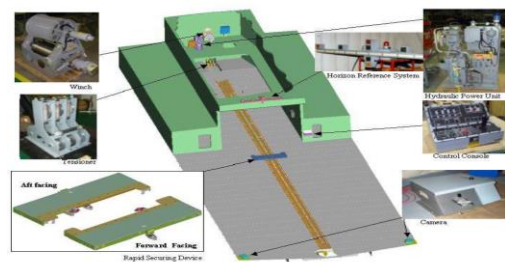
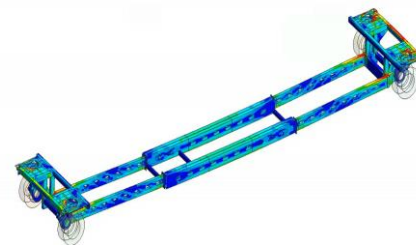
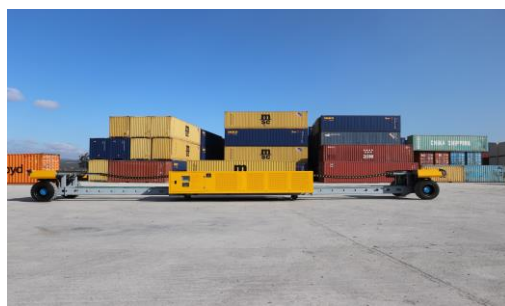
DEFENSE

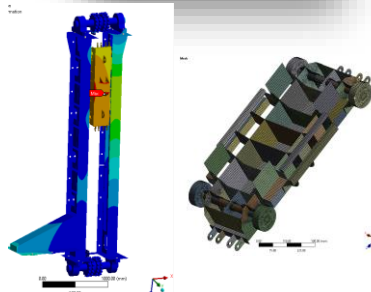
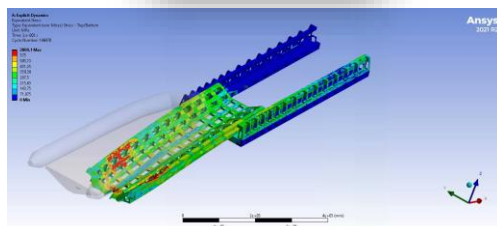
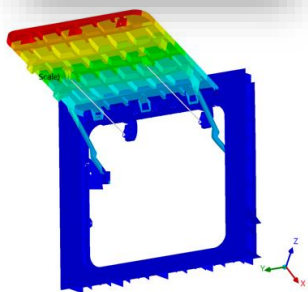
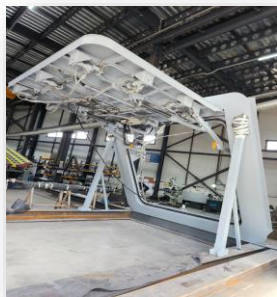
- WATER JET ACOUSTIC ANALYSES
- SURVIVABILITY CALCULATION
- SONAR DOME MECHANIC ARM DESIGN AND ANALYSES
- GAS TURBINE EXHAUST & SILENCER ANALYSES



DEFENSE

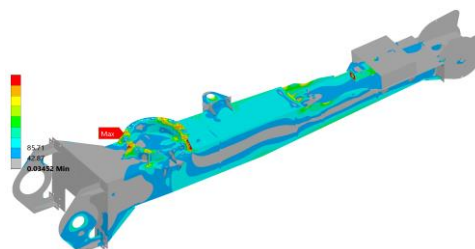
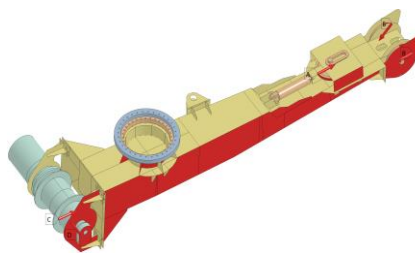
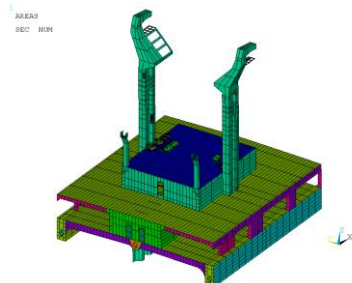
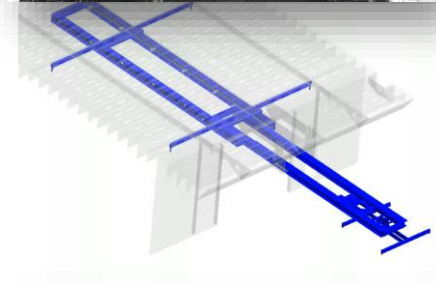
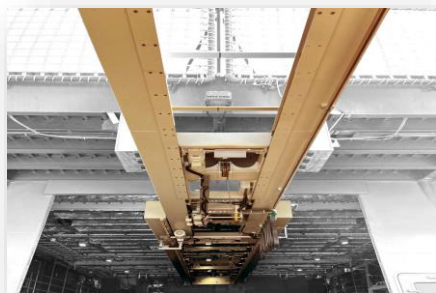
- HELICOPTER TRANSFER VEHICLE DESIGN & ANALYSES
- CONTAINER TRANSFER VEHICLE DESIGN & ANALYSES
- HELICOPTER SECURING AND TRANSFER SYSTEM DESIGN & ANALYSES
- COMPOSITE AND FOLDABLE MAST DESIGN & ANALYSES

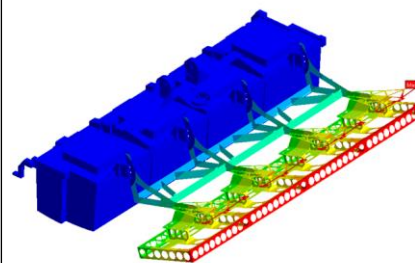
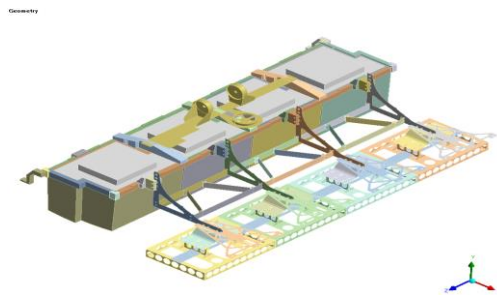
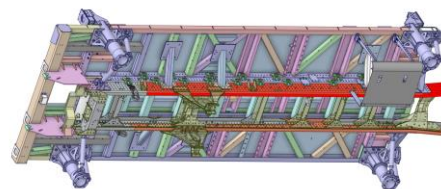
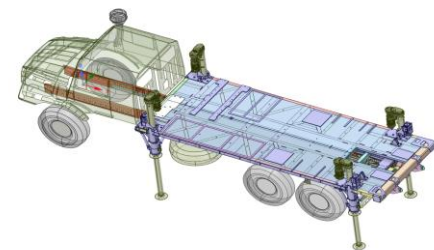
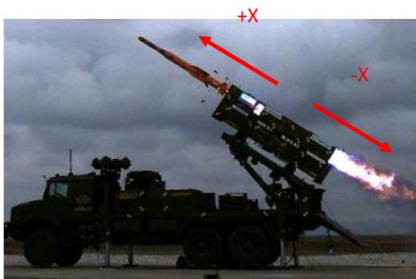
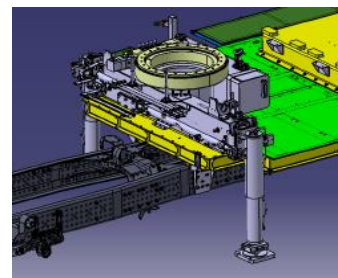
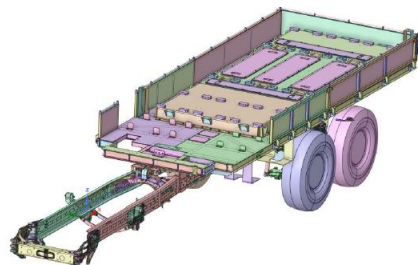
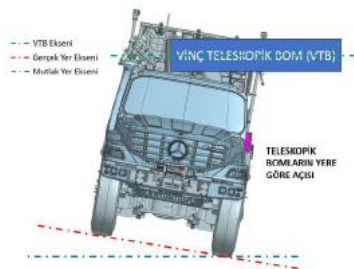
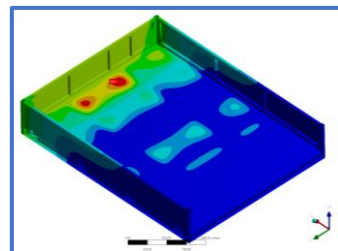
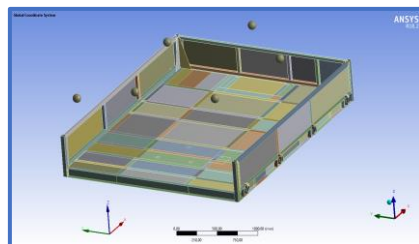




DEFENSE

- BOAT COVER DESIGN & ANALYSES
- BOAT RAMP DESIGN & ANALYSES
- SLIDING PADEYE DESIGN & ANALYSES
- TELESCOPIC CRANE DESIGN & ANALYSES
- REPLENISHMENT AT SEA SYSTEM ANALYSES
- BOAT CRANE DESIGN & ANALYSES





DEFENSE

- VEHICLE PLATFORM ANALYSES
- ON-VEHICLE SYSTEM INTEGRATION ANALYSES
- MISSILE LAUNCHER SYSTEM ANALYSES
- MINE SCREENING VEHICLE MECHANICAL ARM ANALYSES



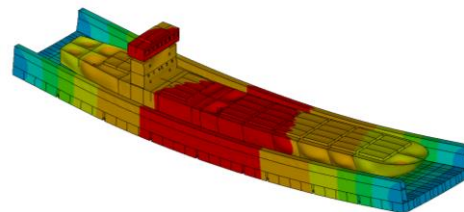
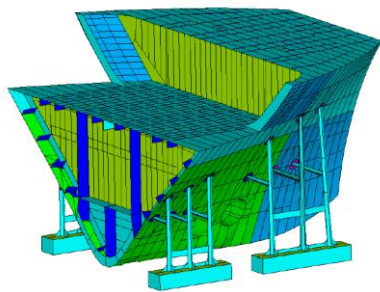
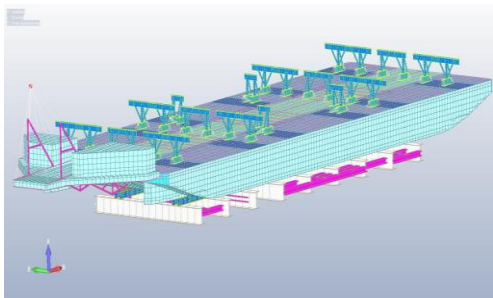
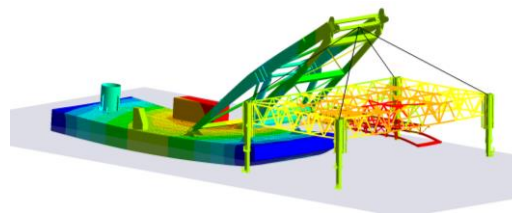
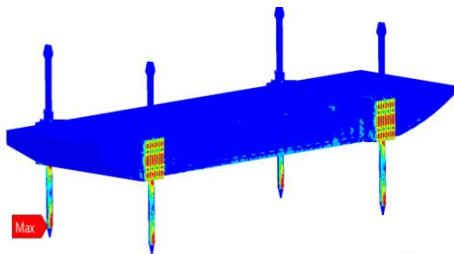
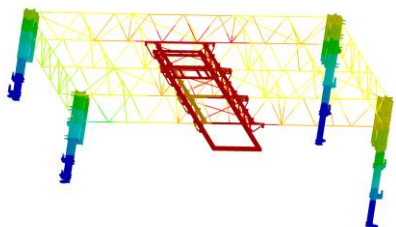
MARINE & OFFSHORE

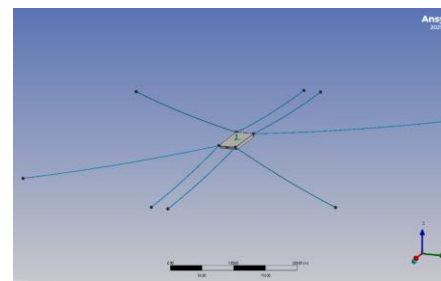
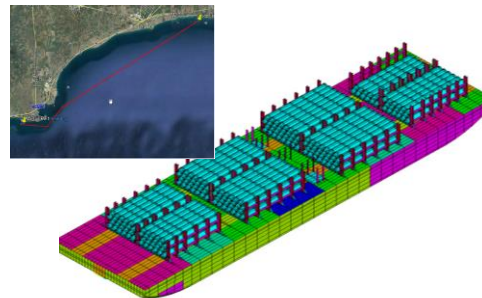
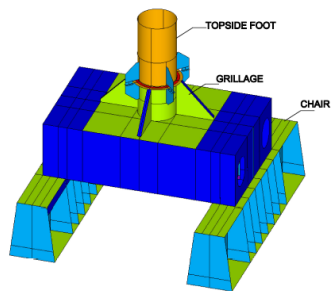
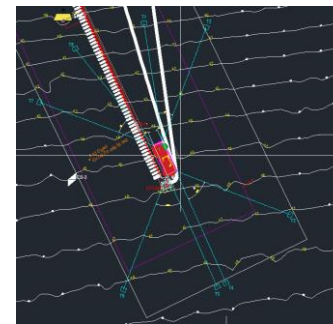
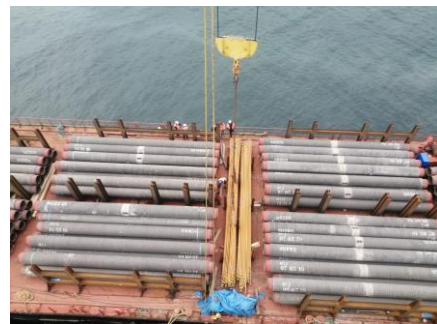
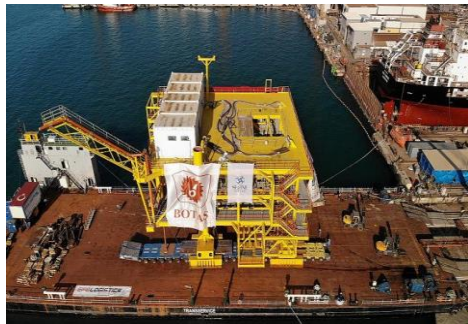




MARINE & OFFSHORE

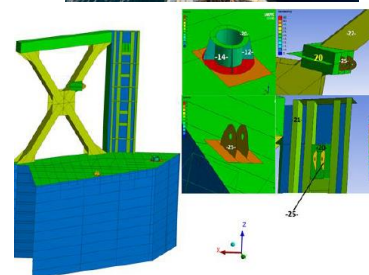
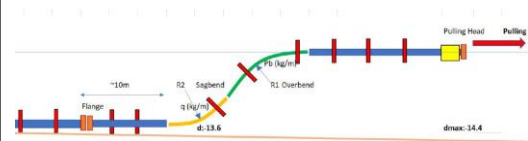
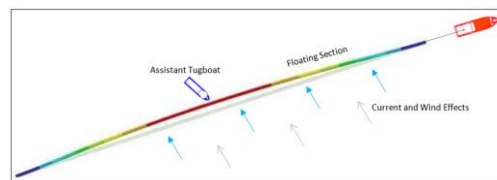
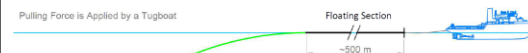
- UNDERWATER LEVELLING SYSTEM DESIGN & ANALYSES
- SPUD LEG DESIGN & ANALYSES
- A-FRAME/SHEAR LEG DESIGN & ANALYSES
- SHIP DOCKING ANALYSES
- SHIP LAUNCHING ANALYSES
- FLOATING DOCK ANALYSES

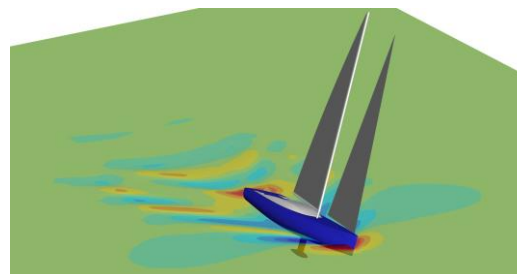
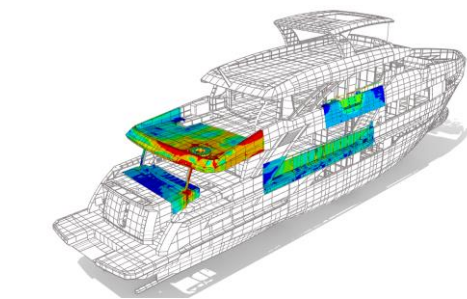




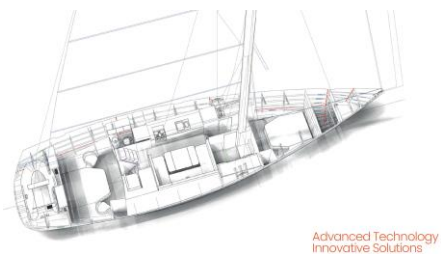
MARINE & OFFSHORE

- OFFSHORE TOPSIDE TRANSPORTATION ANALYSES
- MARINE TRANSPORTATION AND STABILITY CALCULATIONS
- MOORING AND ANCHORAGE ANALYSES
- OFFSHORE DISMOUNT ANALYSES
- PIPE SUBMERSION ANALYSES
- OFFSHORE EQUIPMENT INSTALLATION ANALYSES

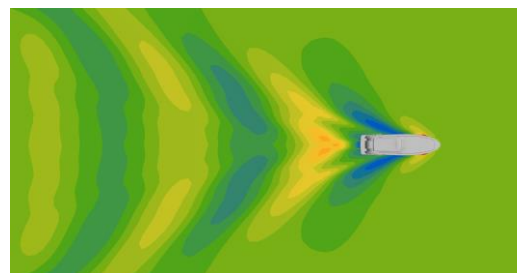
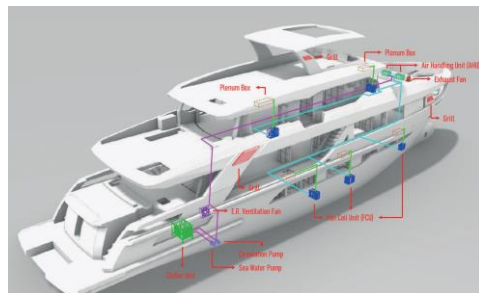




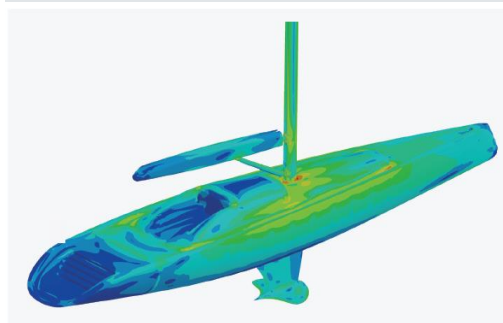
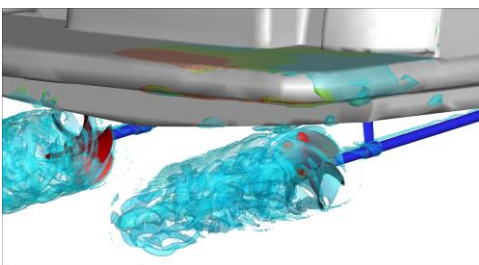
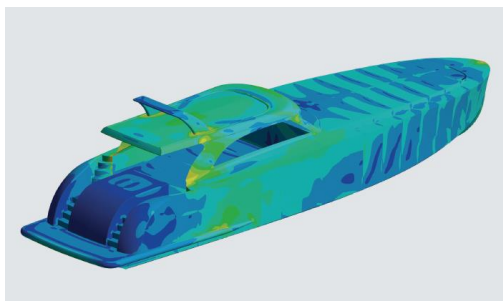
MARINE & OFFSHORE

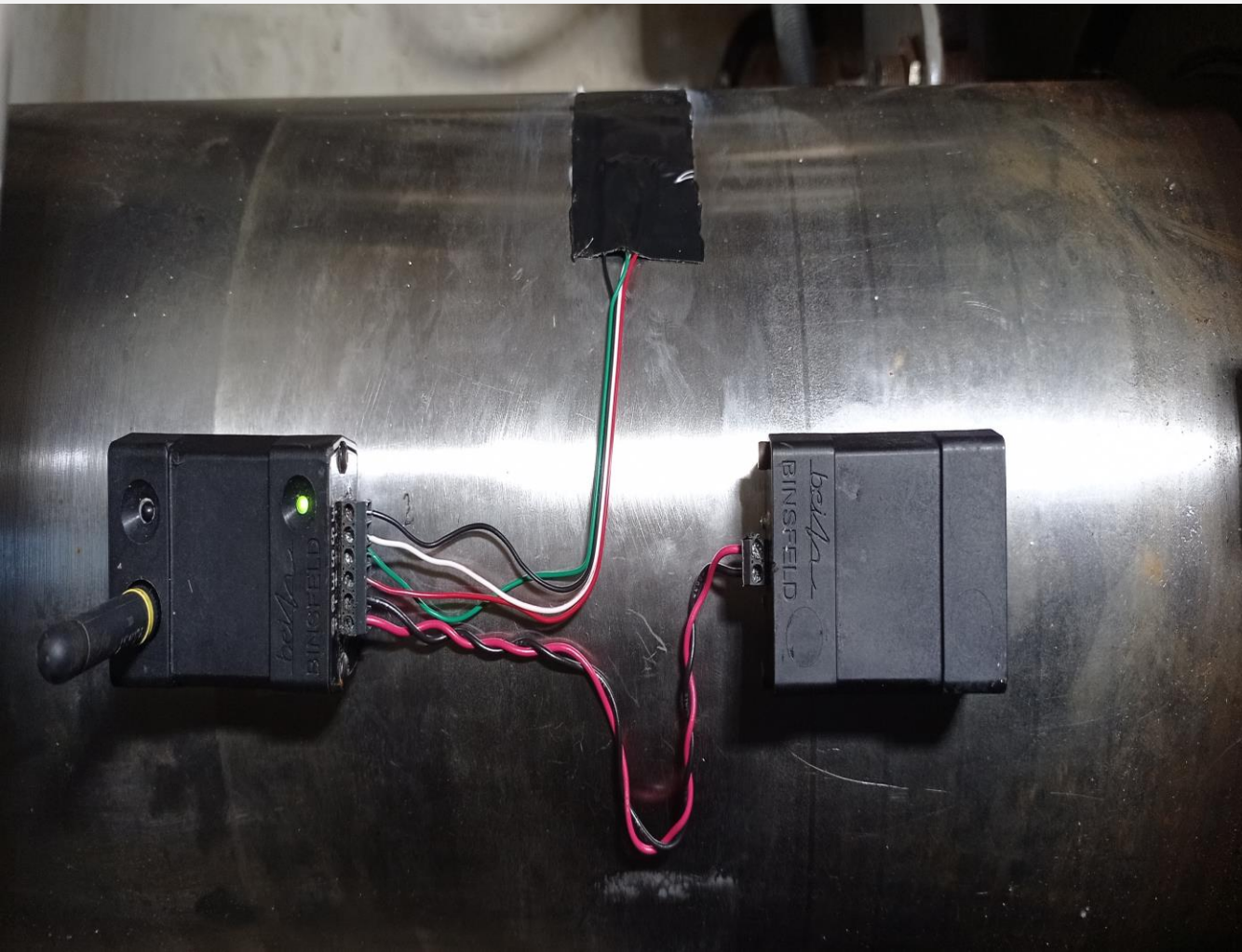


Advanced Technology Innovative Solutions



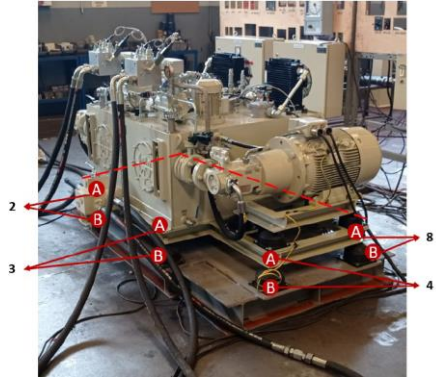
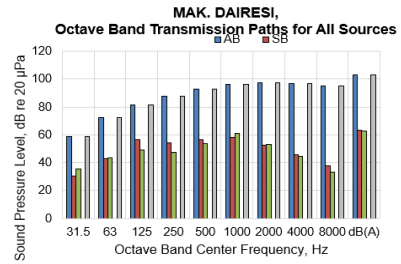
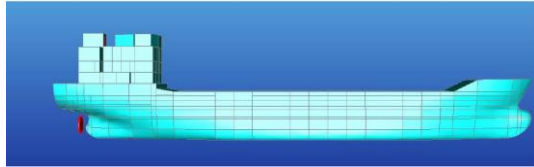
- SEAKEEPING, RESISTANCE, POWER ANALYSES
- GLOBAL/LOCAL STRENGTH, VIBRATION ANALYSES
- MAIN PROPULSION SYSTEM, OUTFIT INSTALLATION ANALYSES
- NOISE, ACOUSTIC ANALYSES
- INSULATION PLAN, MATERIAL SUPPLY
- NOISE, VIBRATION MEASUREMENT





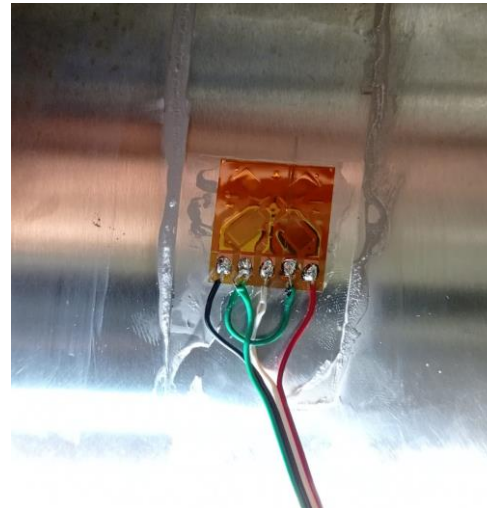
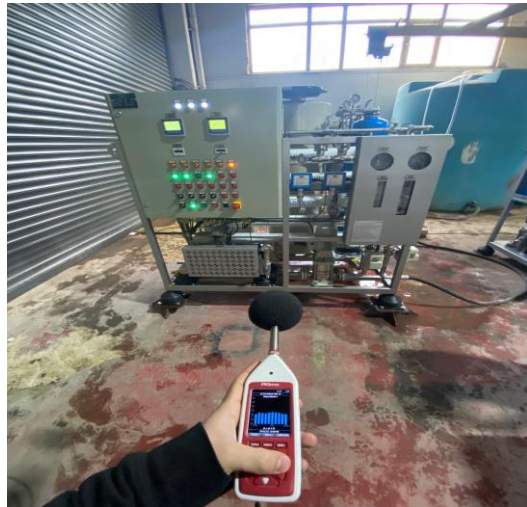
TEST & MEASUREMENT






TEST & MEASUREMENT

- NOISE MEASUREMENT
- VIBRATION - IMPEDANCE MEASUREMENT
- TORQUE-POWER MEASUREMENT





RINA Services S.p.A.
 Via Corchia, 12 - 16128 Genova
 Tel. +39 010 53811
 Fax +39 010 5381000

**CERTIFICATE OF APPROVAL
 OF SERVICE SUPPLIER**
 CERTIFICATE NO. SSU205223XT

This is to certify that

ADVENS MUHENDISLIK A.S.
 Sanayi Mah. Teknopark Bahç. No:1/10C, Is. Kapı No:462
 Pendik TR. TURKEY


*Has been approved in compliance with the
 RINA "RULES FOR THE CERTIFICATION OF SERVICE SUPPLIERS"
 for the supply of the following services to ships and other units classed by RINA:*

O - Measurements of noise level onboard ships
 Z - Determination of engine power
 Z - Vibration analysis of machineries and equipment
 Z - Vibration analysis survey of rotating equipment

Draw of the audit: 14 Sep 2023
 Issued in ISTANBUL
 on 26 Sep 2023

This Certificate is valid from the date of the audit until
 18 Sep 2026

This certificate consists of this sheet plus an attachment.

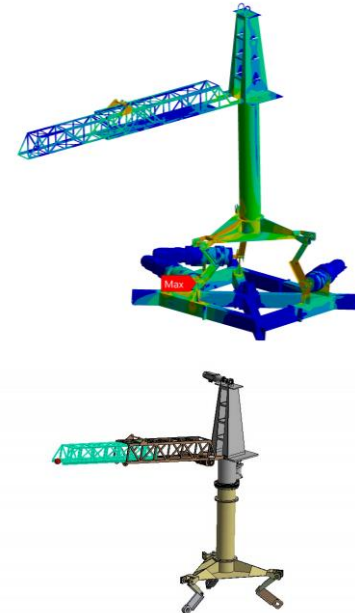
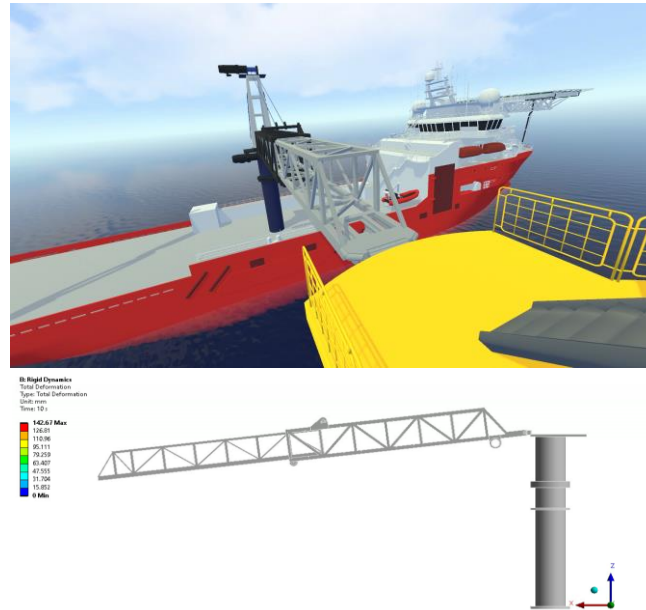
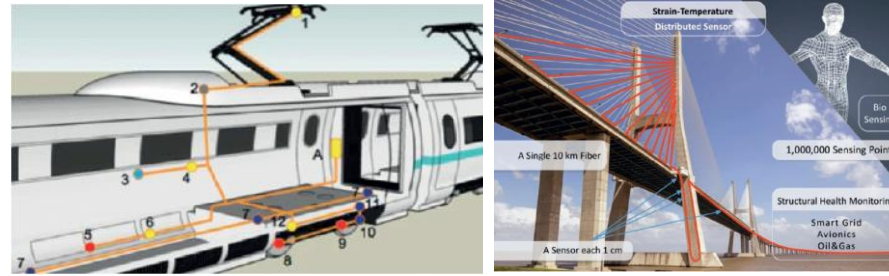
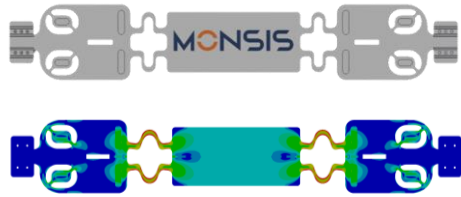


This is an electronically signed document and does not require a handwritten signature.
Devrim KACAR
 RINA Services S.p.A.



R & D





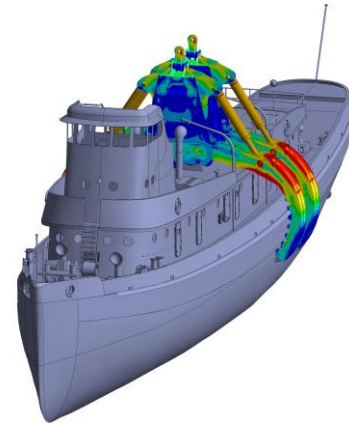
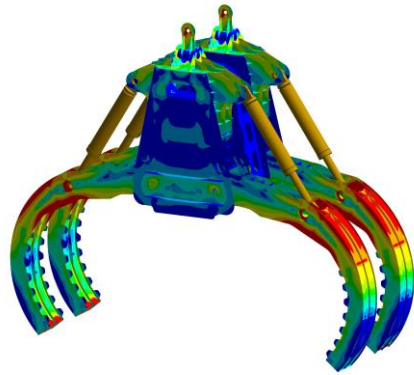
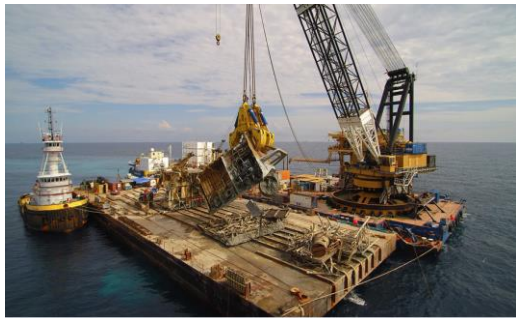
R & D

MONSIS

SIMULTANEOUS STRUCTURAL BEHAVIOUR MONITORING SYSTEM

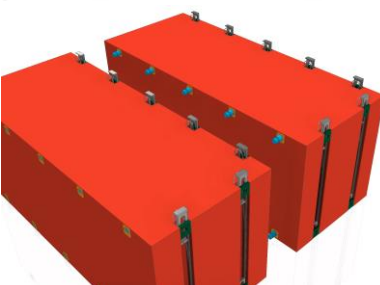
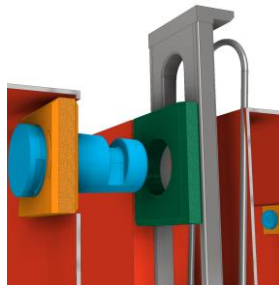
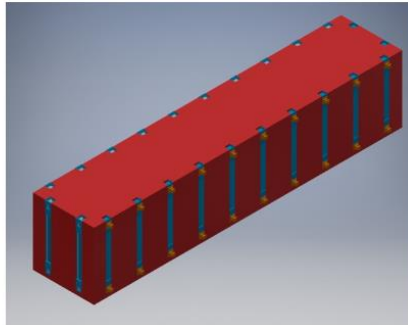
COMPENSATION GANGWAY

- COMMERCIAL - CONFIDENTIAL

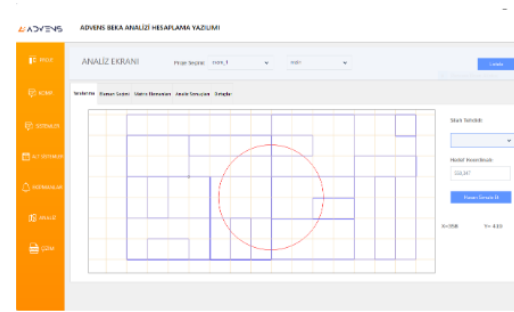
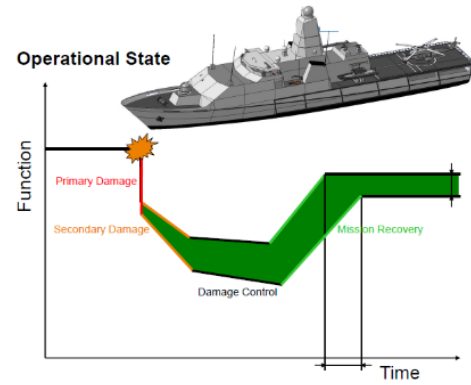


R & D

UNDERWATER GRAB

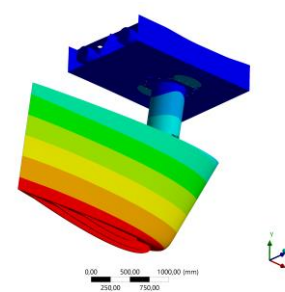
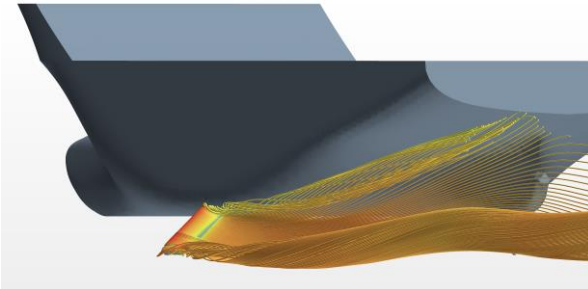
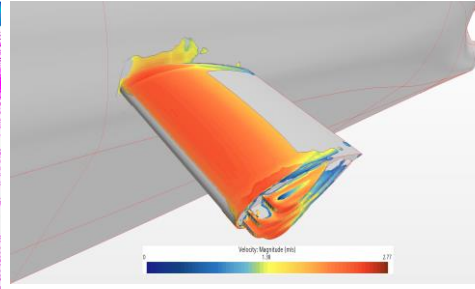
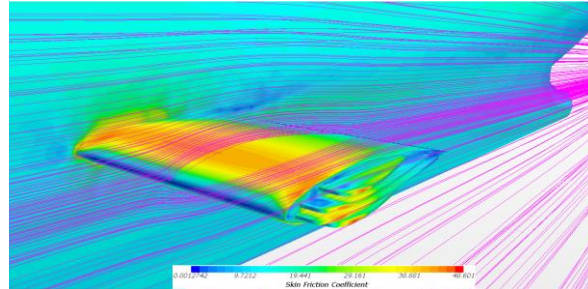
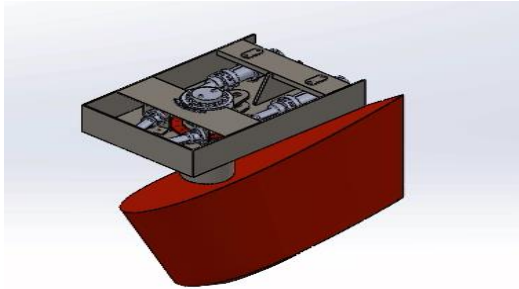


MODULAR CONTAINER SYSTEM



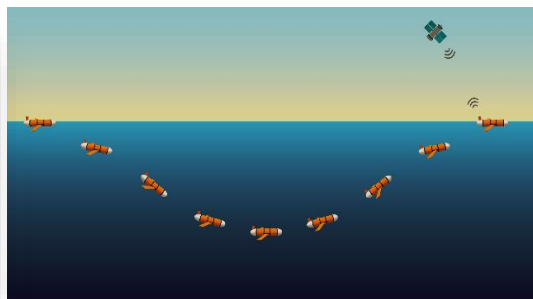
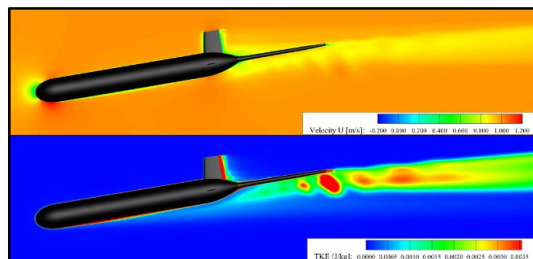
R & D

SURVIVABILITY SOFTWARE

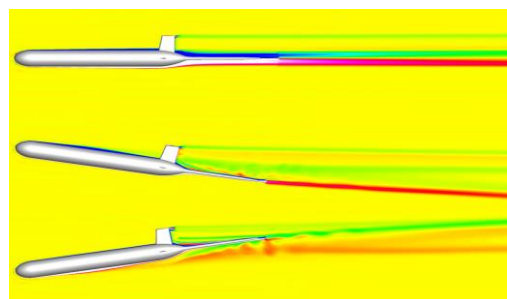


FIN STABILIZER

- COMMERCIAL -
CONFIDENTIAL

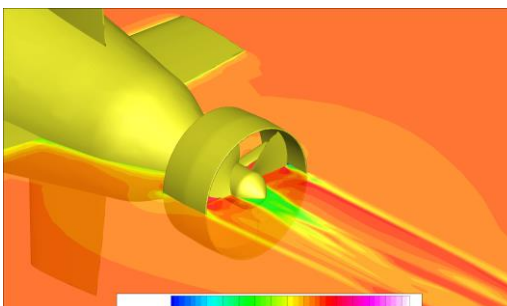
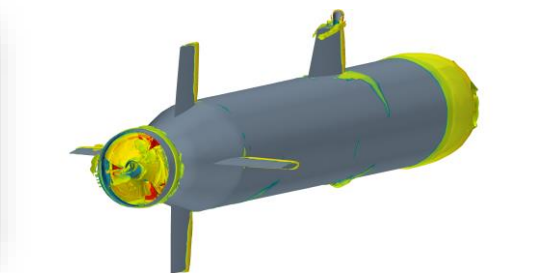
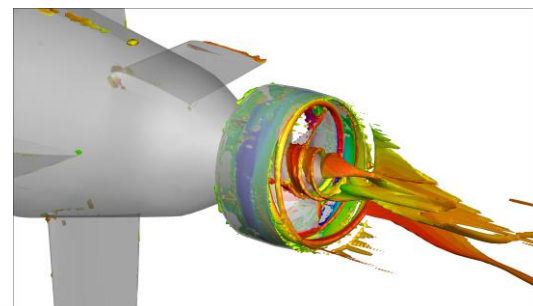


- ▶ Aluminium & Composite Hull
- ▶ **Maximum Depth:** 1000 meters
- ▶ **Weight:** 60 kg
- ▶ **Cruise Speed:** 0,5 m/sn
- ▶ **Navigation:** GPS, Sensors, Altimeter, Gyro, No propeller



R&D

NARVAL UNDERWATER GLIDER



- ▶ Aluminium & Composite Hull
- ▶ **Maximum Depth:** 300 meters
- ▶ **Weight:** 135 kg
- ▶ **Cruise Speed:** 3 kts
- ▶ **Navigation:** GPS, Sensors, Altimeter, Gyro, Propeller

RAMPUS

AUTONOMOUS UNDERWATER VEHICLE

CERTIFICATE

REFERENCES

aselsan

roketsan

TÜRKHAVACILIK
UZAYSANAYII

ASFAT
Askeri Fabrika ve Tersane İşletme A.Ş.

STM

METEKSAN
SAVUNMA

Koç
Koç Bilgi ve Savunma Teknolojileri A.Ş.

CES
ADVANCED COMPOSITE PRODUCTS

KOLUMAN
OTOMOTİV ENDÜSTRİ A.Ş.

GE Grid Solutions

seft
SHIP DESIGN

NAVTEK
NAVTEK NAVAL TECHNOLOGIES INC.

DEARSAN
SHIPYARD

SIRENA MARINE

ARES
SHIPYARD

SEFINE
SHIPYARD

RAK MARINE

SEDEF
SHIPYARD

CEMRE
SHIPYARD

KUZEY STAR

BRONSWERK
ONBOARD CLIMATE ENGINEERING

ISBİR
"yağamla kesintisiz işbirliği"

elkon

YALTES



HEXAGON
studio

MIDDLE EAST
AIR DRILLING SERVICE

BOTAŞ

KOLIN kalyon

ARAS



Current issue date:
01 June 2021

Issue number:
03/2021

Original approval:
01/05/2018

Certificate of Approval

This is to certify that the Management System of:

ADVENS MÜHENDİSLİK A.Ş.

Sarıyer Mah. Telenpark Bld., 1C-2C, No:11/1C/1105 Pendik, İstanbul, Turkey

has been approved by Lloyd's Register to the following standards:

ISO 9001:2015

Approval number(s): ISO 9001 - 00039809

The scope of this approval is applicable to:
Advanced Engineering Services, Production Development, Test Measurement Services

Daniel Oliva

Daniel Oliva Mercurio de Souza

Area Operations Manager - South Europe

Issued by Lloyd's Register Quality Assurance Ltd. (LQA)

Issued on behalf of: Lloyd's Register Quality Assurance Limited



Lloyd's Register Group Limited, its affiliates and subsidiaries, including Lloyd's Register Quality Assurance Limited (LQA), and their respective officers, employees or agents are not to be held liable for any consequences or damages arising from the use of this information or advice by the client or third parties. The approval is granted on the condition that the client or third parties shall remain responsible for the compliance of the management system with the requirements of the applicable standards and for the maintenance of the management system in accordance with the requirements of the applicable standards. Lloyd's Register Group Limited, 1 Trinity Place, Basingstoke, Hampshire, RG24 0PU, UK. Lloyd's Register Group Limited is a registered company in England and Wales, registered number 013226188. Lloyd's Register Quality Assurance Limited, 1 Trinity Place, Basingstoke, Hampshire, RG24 0PU, UK. Lloyd's Register Quality Assurance Limited is a registered company in England and Wales, registered number 013226188.